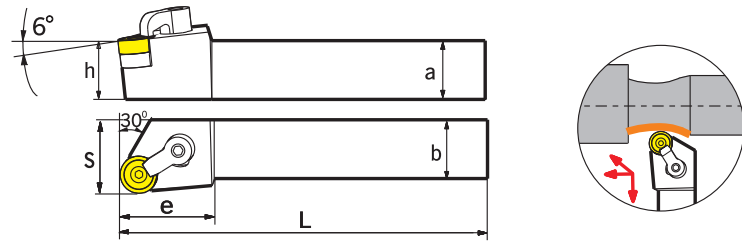
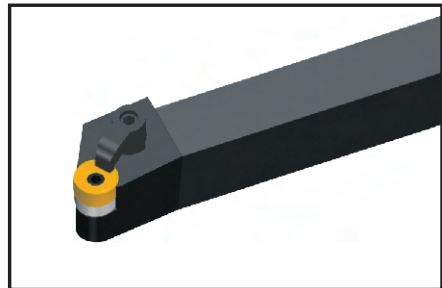


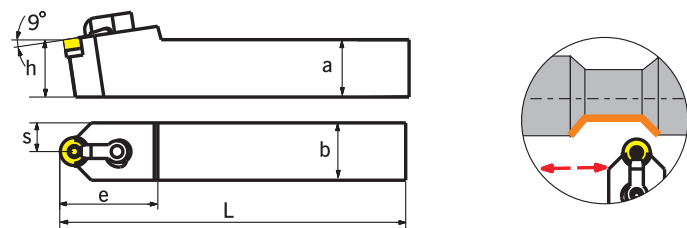
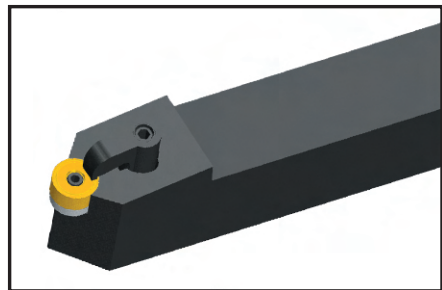
Turning tools

MRGNR



Type	Dimension(mm)							Applicable Inserts	Clamping screw	Shim	Wrench	Clampd	Clamping stud		
	Stock		a	b	L	h	s							e	
	R	L													
MRGNR/L	2020K12	●	●	20	20	125	20	25	32	RN□□ 1204□□	WS061025	MR1204	S3	MCL1814	MSP617
	2525M12	○	○	25	25	150	25	32	32						
	3225P12	●	○	32	25	170	32	32	32						
	3232P12	○	○	32	32	170	32	40	32						

MRDNN

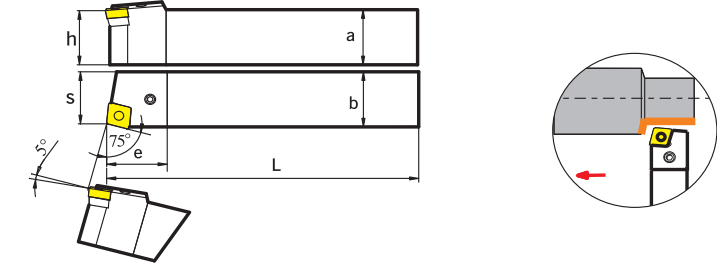
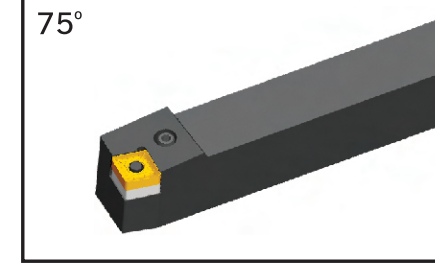


Type	Dimension(mm)							Applicable Inserts	Clamping screw	Shim	Wrench	Clampd	Clamping stud		
	Stock		a	b	L	h	s							e	
	R	L													
MRDNN	2020K12	●	○	20	20	125	20	10	35	RN□□ 1204□□	WS061025	MR1204	S3	MCL1814	MSP617
	2525M12	○	○	25	25	150	25	12.5	35						
	3225P12	○	○	32	25	170	32	12.5	35						
	3232P12	○	○	32	32	170	32	16	35						

● Stock ○ in Production order

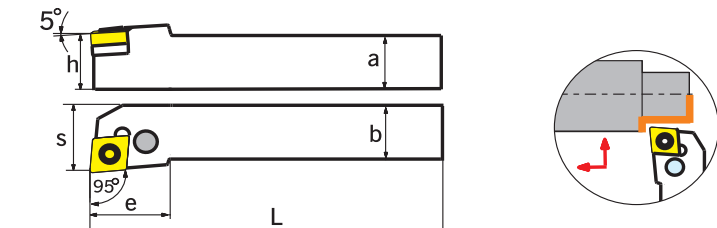
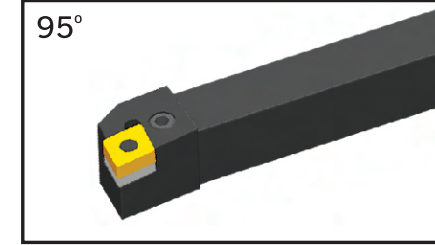
Turning tools

PCBNR/L



Type	Dimension(mm)							Applicable Inserts	screw	Shim	Wrench	Lever	Shim pin		
	Stock		a	b	L	h	s							e	
	R	L													
PCBNR/L	2020K12			20	20	125	20	17	27	CN□□ 1204□□	VHX0821	PC12318	S3	LV4	SP4
	2525M12			25	25	150	25	22	27						
	3232P12			32	32	170	32	27	27						
	2525M16			25	25	150	25	22	33						
	3232P16			32	32	170	32	27	33						
	3232P19			32	32	170	32	27	38						
	4040S19			40	40	250	40	35	38						
	4040S25			40	40	250	40	35	50						

PCLNR/L

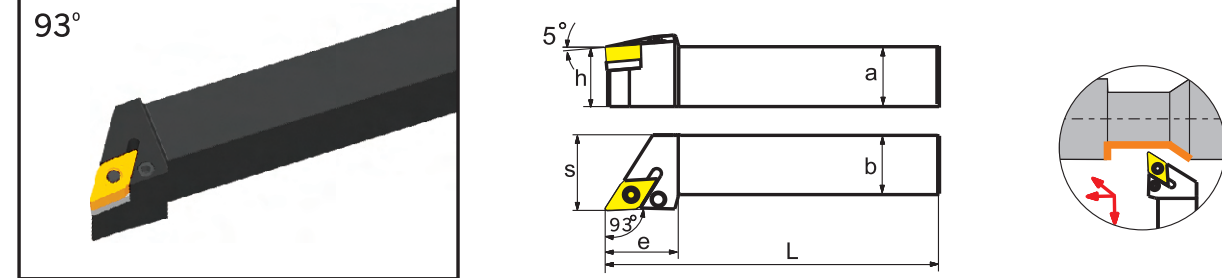


Type	Dimension(mm)							Applicable Inserts	screw	Shim	Wrench	Lever	Shim pin		
	Stock		a	b	L	h	s							e	
	R	L													
PCLNR/L	1616H09			16	16	100	16	20	20	CN□□ 0903□□	VHX0613	PC09318	S2	LV3	SP3
	2020K09			20	20	125	20	25	22						
	2525M09			25	25	150	25	32	22						
	2020K12			20	20	125	20	25	28						
	2525M12			25	25	150	25	32	28						
	3232P12			32	32	170	32	40	28						
	2525M16			25	25	150	25	32	33						
	3232P16			32	32	170	32	40	33						
	3232P19			32	32	170	32	40	38						
	4040S19			40	40	250	40	50	38						
	4040S25			40	40	250	40	50	50						

● Stock ○ in Production order

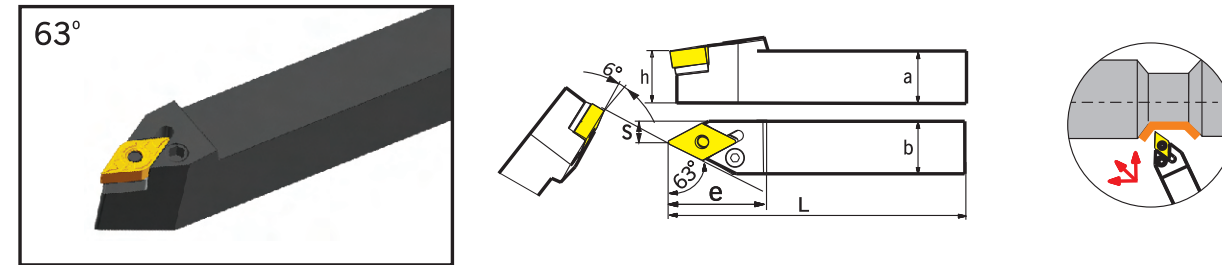
Turning tools

PDJNR/L



Type	Dimension(mm)							Applicable Inserts	screw	Shim	Wrench	Lever	Shim pin	
	Stock		a	b	L	h	s							e
	R	L												
PDJNR/L	1616H11		16	16	100	16	20	25	DN \square 1104 \square	VHX0613	PD11270	S2.5	LV3	SP3
	2020K11		20	20	125	20	25	25						
	2525M11		25	25	150	25	32	30						
	2020K15		20	20	125	20	25	35	DN \square 1506 \square	VHX0821	PD15318	S3	LV4B	SP4
	2525M15		25	25	150	25	32	35						
	3232P15		32	32	170	32	40	35						
	2020K15-3		20	20	125	20	25	35	DN \square 1504 \square	VHX0821	PD15318	S3	LV4	SP4
	2525M15-3		25	25	150	25	32	35						
	3232P15-3		32	32	170	32	40	35						

PDNNR/L

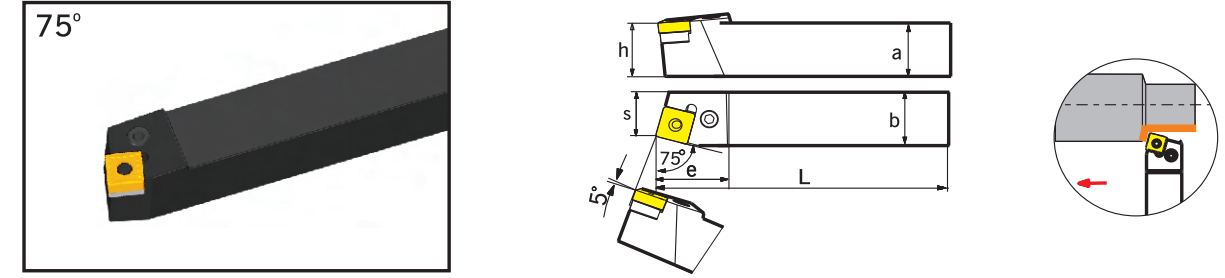


Type	Dimension(mm)							Applicable Inserts	screw	Shim	Wrench	Lever	Shim pin	
	Stock		a	b	L	h	s							e
	R	L												
PDNNR/L	2020K15		20	20	125	20	8	37	DN \square 1506 \square	VHX0821	PD15318	S3	LV4B	SP4
	2525M15		25	25	150	25	12.5	37						
	3225P15		32	25	170	32	16	37						
	3232P15		32	32	170	32	16	37	DN \square 1504 \square	VHX0821	PD15318	S3	LV4	SP4
	2020K15-3		20	20	125	20	8	37						
	2525M15-3		25	25	150	25	12.5	37						
	3232P15-3		32	32	170	32	16	37						

● Stock ○ in Production order

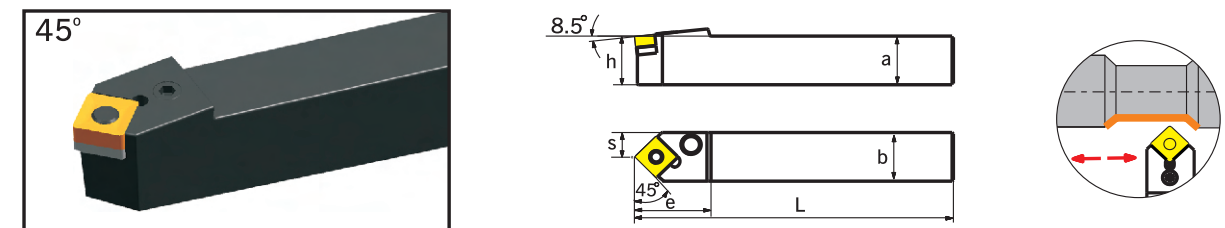
Turning tools

PSBNR/L



Type	Dimension(mm)							Applicable Inserts	screw	Shim	Wrench	Lever	Shim pin	
	Stock		a	b	L	h	s							e
	R	L												
PSBNR/L	1616H09		16	16	100	16	13	21	SN \square 0903 \square	VHX0613	PS09318	S2.5	LV3	Sp3
	2020K09		20	20	125	20	17	23						
	2020K12		20	20	125	20	17	28						
	2525M12		25	25	150	25	22	28	SN \square 1204 \square	VHX0821	PS12318	S3	LV4	SP4
	3225P12		32	25	170	32	22	28						
	3232P12		32	32	170	32	27	28						
	2525M15		25	25	150	25	22	35	SN \square 1506 \square	VHX0825	PS15476	S3	LV5	SP5
	3232P15		32	32	170	32	27	35						
	3232P19		32	32	170	32	27	40						
	4040S19		40	40	250	40	35	40	SN \square 1906 \square	VHX1027	PS19476	S4	LV6	SP6
	4040S25		40	40	250	40	35	48						
									SN \square 2509 \square	VHX1236	Ps25476	S5	LV8	SP8

PSDNN

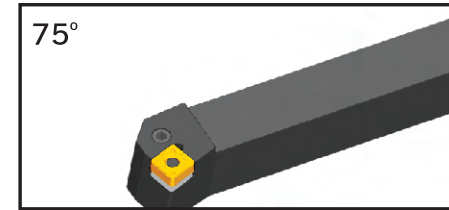


Type	Dimension(mm)							Applicable Inserts	screw	Shim	Wrench	Lever	Shim pin	
	Stock		a	b	L	h	s							e
	R	L												
PSDNN	2020K12		20	20	125	20	10	30	SN \square 1204 \square	VHX0821	PS12318	S3	LV4	SP4
	2525M12		25	25	150	25	12.5	30						
	3232P12		32	32	170	32	16	40						
	2525M15		25	25	150	25	12.5	40	SN \square 1506 \square	VHX0825	PS15476	S3	LV5	SP5
	3232P15		32	32	170	32	16	40						
	3232P19		32	32	170	32	16	40						
	4040S19		40	40	250	40	20	40	SN \square 1906 \square	VHX1027	PS19476	S4	LV6	SP6
	4040S25		40	40	250	40	20	50						
									SN \square 2509 \square	VHX1236	PS26476	S5	LV8	SP8

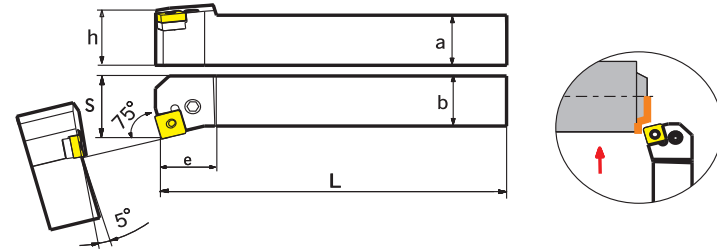
● Stock ○ in Production order

Turning tools

PSKNR/L

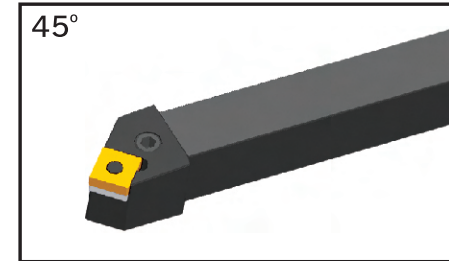


75°

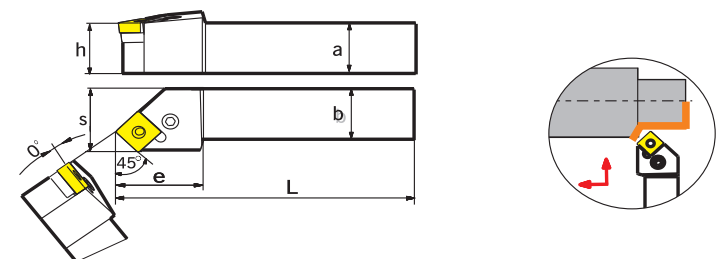


Type	Dimension(mm)							Applicable Inserts	screw	Shim	Wrench	Lever	Shim pin	
	Stock		a	b	L	h	s							e
	R	L												
PSKNR/L	1616H09		16	16	100	16	20	17	SN□□ 0903□□	VHX0613	PS09318	S2.5	LV3	Sp3
	2020K09		20	20	125	20	25	20						
	2020K12		20	20	125	20	25	26						
	2525M12		25	25	150	25	32	26	SN□□ 1204□□	VHX0821	PS12318	S3	LV4	SP4
	3232P12		32	32	170	32	40	26						
	2525M15		25	25	150	25	32	32						
	3232P15		32	32	170	32	40	32	SN□□ 1506□□	VHX0825	PS15476	S3	LV5	SP5
	3232P19		32	32	170	32	40	36						
	4040S19		40	40	250	40	50	40	SN□□ 1906□□	VHX1027	PS19476	S4	LV6	SP6
	4040S25		40	40	250	40	50	50	SN□□ 2509□□	VHX1236	PS25476	S5	LV8	SP8

PSSNR/L



45°

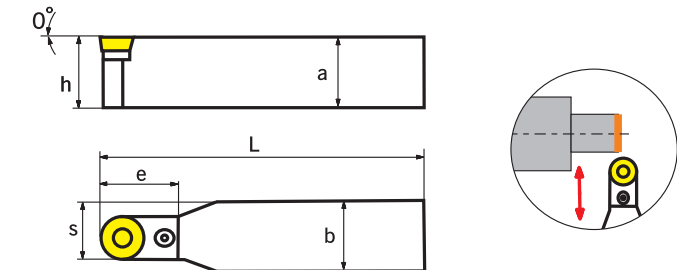
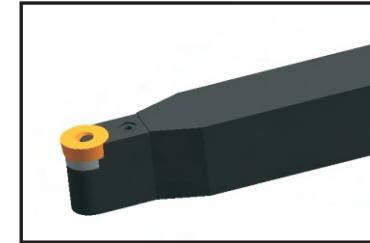


Type	Dimension(mm)							Applicable Inserts	screw	Shim	Wrench	Lever	Shim pin	
	Stock		a	b	L	h	s							e
	R	L												
PSSNR/L	1616H09		16	16	100	16	20	25	SN□□ 0903□□	VHX0613	PS09318	S2.5	LV3	Sp3
	2020K12		20	20	125	20	25	30						
	2525M12		25	25	150	25	32	30	SN□□ 1204□□	VHX0821	PS12318	S3	LV4	SP4
	3232P12		32	32	170	32	40	40						
	2525M15		25	25	150	25	32	30						
	3232P15		32	32	170	32	40	40	SN□□ 1506□□	VHX0825	PS15476	S3	LV5	SP5
	3232P19		32	32	170	32	40	40	SN□□ 1906□□	VHX1027	PS19476	S4	LV6	SP6
	4040S19		40	40	250	40	50	50						
	4040S25		40	40	250	40	50	50	SN□□ 2509□□	VHX1236	PS25476	S5	LV8	SP8

● Stock ○ in Production order

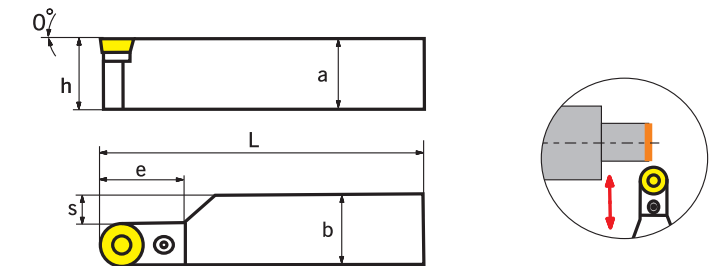
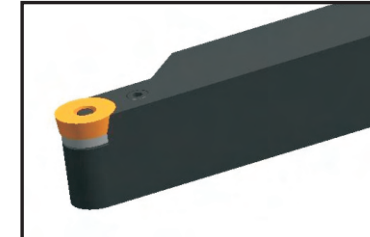
Turning tools

PRDCN



Type	Dimension(mm)							Applicable Inserts	screw	Shim	Wrench	Lever	Shim pin	
	Stock		a	b	L	h	s							e
	R	L												
PRDCN	2020K12		20	20	125	20	16	30	RCMX1204□□	VHX0613	PR 1204	S2.5	LCL12C	Sp3
	2525M12		25	25	150	25	18.5	30						
	2525M16		25	25	150	25	20.5	35						
	3232P16		32	32	170	32	24	35	RCMX1606□□	VHX0621	PR 1604	S2.5	LCL16C	SP4
	3232P20		32	32	170	32	26	40						
	4040T20		40	40	300	40	30	50	RCMX2006□□	VHX0825	PR 2004	S3	LCL20C	SP5
	3232P25		32	32	170	32	28.5	45						
	4040T25		40	40	300	40	32.5	50	RCMX2507□□	VHX1030	PR 2506	S4	LCL25C	SP6

PRACR/L

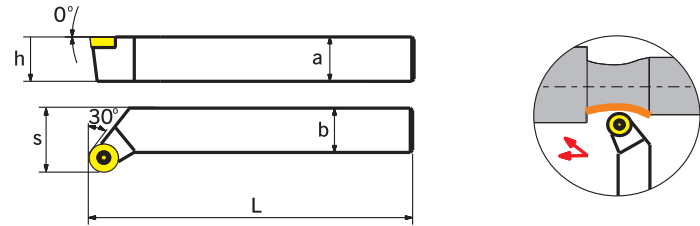
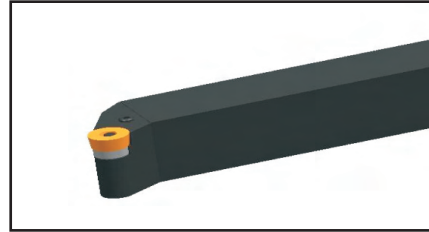


Type	Dimension(mm)							Applicable Inserts	screw	Shim	Wrench	Lever	Shim pin	
	Stock		a	b	L	h	s							e
	R	L												
PRACR/L	2020K12		20	20	125	20	16	30	RCMX1204□□	VHX0613	PR 1204	S2.5	LCL12C	SP3
	2525M12		25	25	150	25	18.5	30						
	2525M16		25	25	150	25	20.5	35	RCMX1606□□	VHX0621	PR 1604	S2.5	LCL16C	SP4
	3232P16		32	32	170	32	24	35						
	3232P20		32	32	170	32	26	40	RCMX2006□□	VHX0825	PR 2004	S3	LCL20C	SP5
	4040T20		40	40	300	40	30	50						
	3232P25		32	32	170	32	28.5	45						
	4040T25		40	40	300	40	32.5	50	RCMX2507□□	VHX1030	PR 2506	S4	LCL25C	SP6

● Stock ○ in Production order

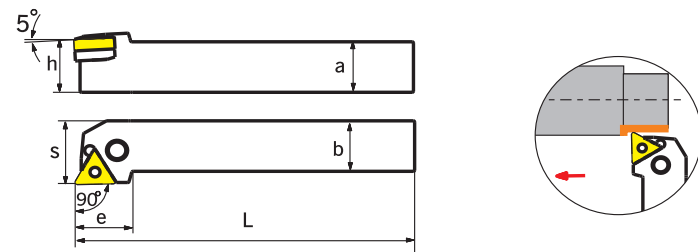
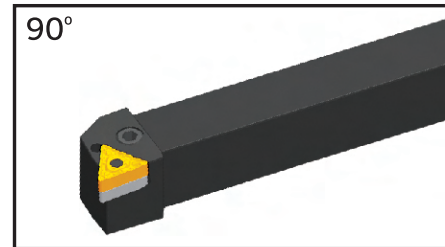
Turning tools

PRGCR/L



Type	Dimension(mm)							Applicable Inserts	screw	Shim	Wrench	Lever	Shim pin	
	Stock		a	b	L	h	s							e
	R	L												
PRGCR/L	2020K12		20	20	125	20	16	30	RCMX1204□□	VHX0613	PR 1204	S2.5	LCL12C	SP3
	2525M12		25	25	150	25	18.5	30	RCMX1606□□	VHX0621	PR 1604	S2.5	LCL16C	SP4
	2525M16		25	25	150	25	20.5	35	RCMX2006□□	VHX0825	PR 2004	S3	LCL20C	SP5
	3232P16		32	32	170	32	24	35	RCMX2507□□	VHX1030	PR 2506	S4	LCL25C	SP6
	3232P20		32	32	170	32	26	40						
	4040T20		40	40	300	40	30	50						
	3232P25		32	32	170	32	28.5	45						
	4040T25		40	40	300	40	32.5	50						

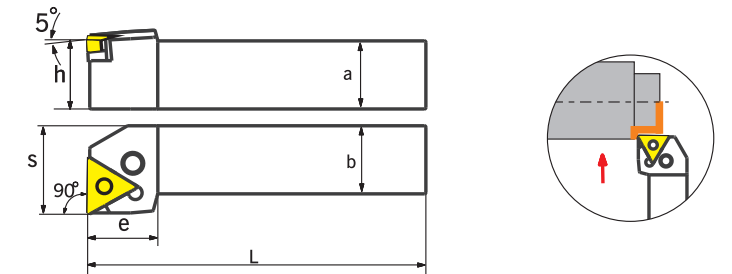
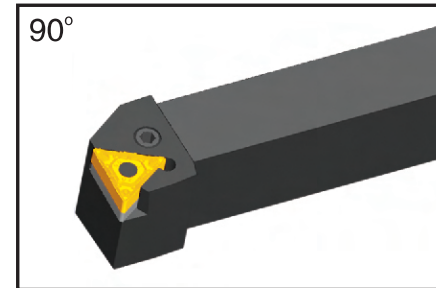
PTGNR/L



Type	Dimension(mm)							Applicable Inserts	screw	Shim	Wrench	Lever	Shim pin	
	Stock		a	b	L	h	s							e
	R	L												
PTGNR/L	1616H11		16	16	100	16	20	18	TN□□ 1103□□	VHX059B	-	S2	LV2	-
	2020K11		20	20	125	20	25	19						
	2525M11		25	25	150	25	32	20						
	1616H16		16	16	100	16	20	20						
	2020K16		20	20	125	20	25	20	TN□□ 1604□□	VHX0617	PT16476	S2	LV3	SP3
	2525M16		25	25	150	25	32	20						
	3232P16		32	32	170	32	40	20						
	2525M22		25	25	150	25	32	28	TN□□ 2204□□	VHX0821	PT22476	S3	LV4	SP4
	3232P22		32	32	170	32	40	28						
	3232P27		32	32	170	32	40	33	TN□□ 2706□□	VHX0825	PT27635	S3	LV5	SP5
4040S27		40	40	250	40	50	33							

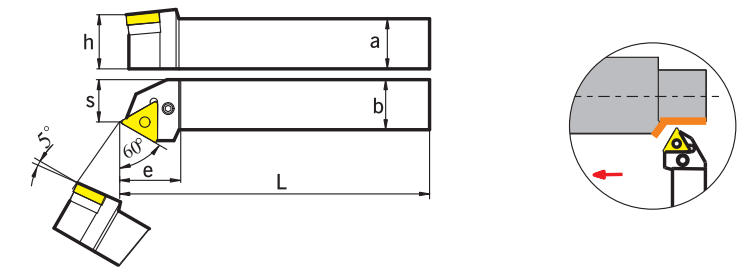
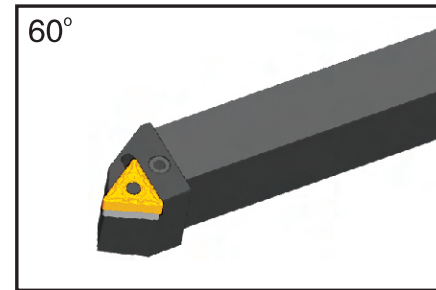
Turning tools

PTFNR/L



Type	Dimension(mm)							Applicable Inserts	screw	Shim	Wrench	Lever	Shim pin	
	Stock		a	b	L	h	s							e
	R	L												
PTFNR/L	1616H16		16	16	100	16	20	20	TN□□ 1604□□	VHX0617	PT16476	S2.5	LV3	SP3
	2020K16		20	20	125	20	25	20						
	2525M16		25	25	150	25	32	20						
	2525M22		25	25	150	25	32	25	TN□□ 2204□□	VHX0821	PT22476	S3	LV4	SP4
	3232P22		32	32	170	32	40	25						
	3232P27		32	32	170	32	40	34	TN□□ 2706□□	VHX0825	PT27635	S3	LV5	SP5
	4040S27		40	40	250	40	50	34						

PTTNR/L

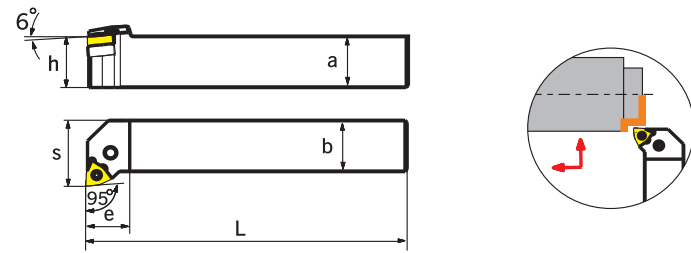
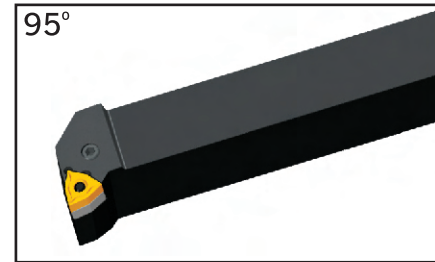


Type	Dimension(mm)							Applicable Inserts	screw	Shim	Wrench	Lever	Shim pin	
	Stock		a	b	L	h	s							e
	R	L												
PTTNR/L	1616H16		16	16	100	16	13	25	TN□□ 1604□□	VHX0617	PT16476	S2.5	LV3	SP3
	2020K16		20	20	125	20	17	25						
	2525M22		25	25	150	25	22	32	TN□□ 2204□□	VHX0821	PT22476	S3	LV4	SP4

● Stock ○ in Production order

Turning tools

PWLNR/L

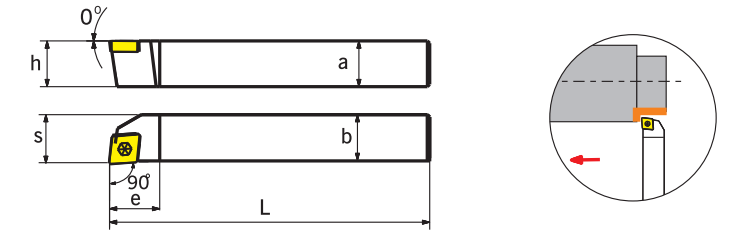
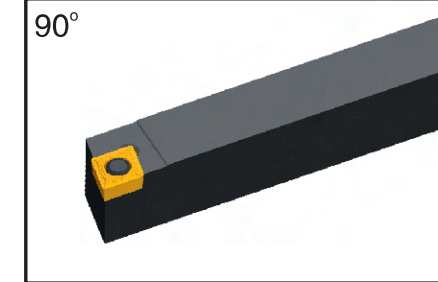


Type	Dimension(mm)							Applicable Inserts	screw	Shim	Wrench	Lever	Shim pin	
	Stock		a	b	L	h	s							e
	R	L												
PWLNR/L	1616H06		16	16	100	16	20	20	WN□ 0604□	VHX0617	PW06270	S2.5	LV3	SP3
	2020K06		20	20	125	20	25	20						
	2525M06		25	25	150	25	32	20						
	2020K08	●	20	20	125	20	25	26						
	2525M08	●	25	25	150	25	32	26						
3232P08	●	32	32	170	32	40	35	WN□ 0804□	VHX0821	PW08318	S3	LV4	SP4	

● Stock ○ in Production order

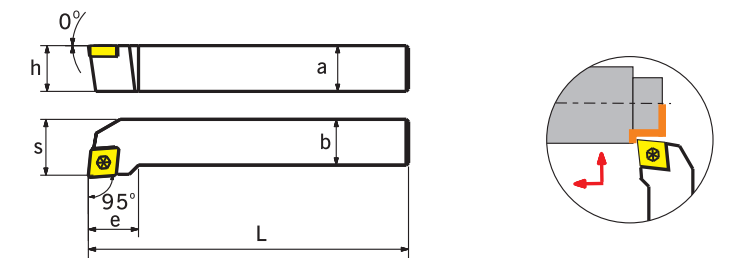
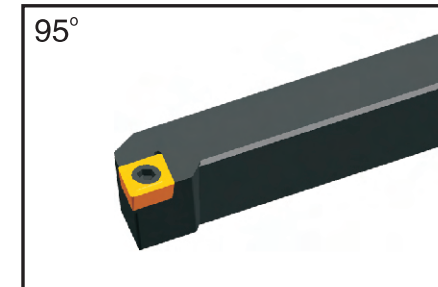
Turning tools

SCACR/L



Type	Dimension(mm)							Applicable Inserts	Screw	Wrench	
	Stock		a	b	L	h	s				e
	R	L									
SCACR/L	1010E06		10	10	70	10	10.5	10	CC□T 0602□	L60M2.5×5	T08
	1212F09		12	12	80	12	12.7	16			

SCLCR/L

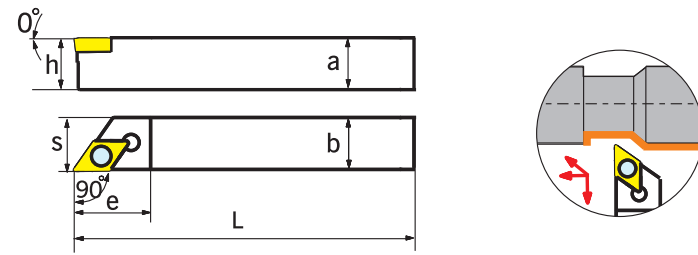
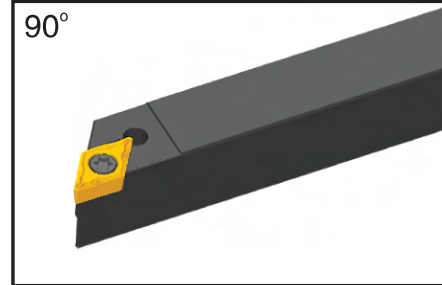


Type	Dimension(mm)							Applicable Inserts	Screw	Wrench	
	Stock		a	b	L	h	s				e
	R	L									
SCLCR/L	1212F09	○	○	12	12	80	12	16	CC□T 09T3□	L60M4×8	T15
	1616H09	●	●	16	16	100	16	20			
	2020K09	●	●	20	20	125	20	25			
	2020K12	●	●	20	20	125	20	25			
	2525M12	●	●	25	25	150	25	32			
	3225P12	○	○	32	25	170	32	32			
	3232P12	○	○	32	32	170	32	40			
								CC□T 1204□	L60M5×12	T20	

● Stock ○ in Production order

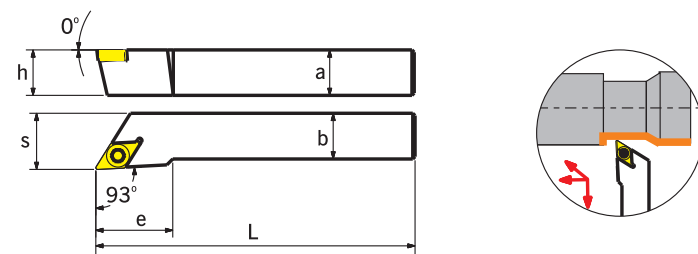
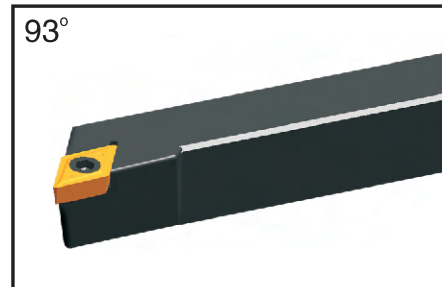
Turning tools

SDACR/L



Type	Dimension(mm)							Applicable Inserts	Screw	Wrench	
	Stock		a	b	L	h	s				e
	R	L									
SDACR/L	1010E07		10	10	70	10	10.5	15	DC _{CT} 0702□□	L60M2.5×5	T08
	1212F11		12	12	80	12	12.5	15	DC _{CT} 11T3□□	L60M4×8	T15
	1616H11		16	16	100	16	16.7	24			

SDJCR/L

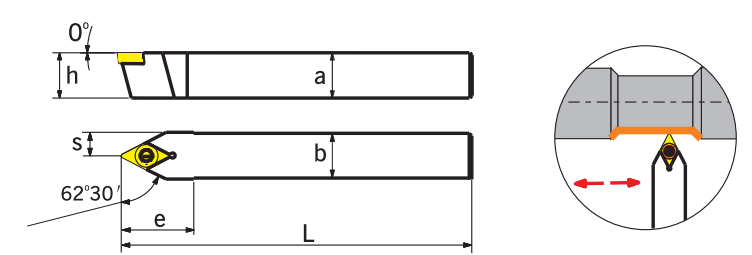
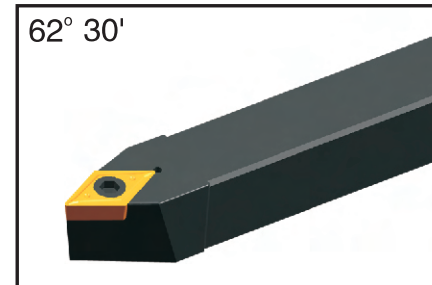


Type	Dimension(mm)							Applicable Inserts	Screw	Wrench		
	Stock		a	b	L	h	s				e	
	R	L										
SDJCR/L	1010E07		10	10	70	10	12	15	DC _{CT} 0702□□	L60M2.5×5	T08	
	1212F07		12	12	80	12	16	15				
	1616H07	○	○	16	16	100	16	20				18
	2020K07	●	●	20	20	125	20	25	24	DC _{CT} 11T3□□	L60M4×8	T15
	1616H11	●	●	16	16	100	16	20	24			
	2020K11	●	●	20	20	125	20	25	24			
	2525M11	●	●	25	25	150	25	32	29			
	3225P11	○	○	32	25	170	32	32	29			
	3232P11			32	32	170	32	32	29			

● Stock ○ in Production order

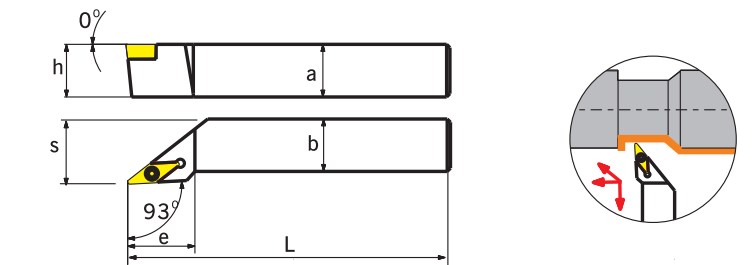
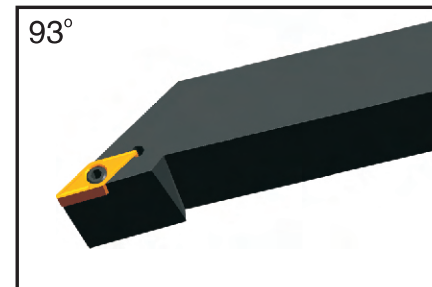
Turning tools

SDNCN



Type	Dimension(mm)							Applicable Inserts	Screw	Wrench		
	Stock		a	b	L	h	s				e	
	R	L										
SDNCN	1010E07	○	○	10	10	70	10	5	20	DC _{CT} 0702□□	L60M2.5×5	T08
	1212F07	○	○	12	12	80	12	6	20			
	1212H11	●	●	12	12	100	12	6	30			
	1616H11	●	●	16	16	100	16	8	30	DC _{CT} 11T3□□	L60M4×8	T15
	2020K11	●	●	20	20	125	20	10	30			
	2525M11	●	●	25	25	150	25	12.5	30			

SVJCR/L

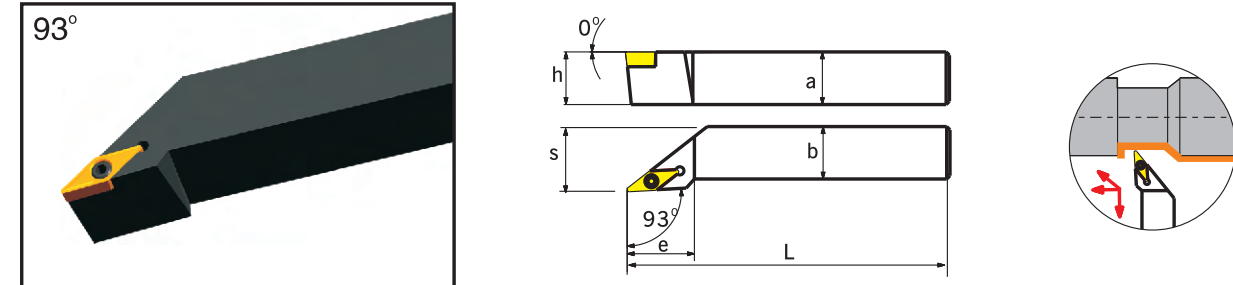


Type	Dimension(mm)							Applicable Inserts	Screw	Wrench		
	Stock		a	b	L	h	s				e	
	R	L										
SVJCR/L	1212F11	○	○	12	12	80	12	16	27	VC _{CT} 1103□□	L60M2.5×5	T08
	1616H11	●	●	16	16	100	16	20	27			
	2020K11	●	●	20	20	125	20	25	27			
	2525M11	●	●	25	25	150	25	32	27			
	1616H16	●	●	16	16	100	16	20	36			
	2020K16	●	●	20	20	125	20	25	41			
	2525M16	●	●	25	25	150	25	32	41	VC _{CT} 1604□□	L60M4×8	T15
	3225P16	○	○	32	25	170	32	32	41			
	3232P16			32	32	170	32	32	41			

● Stock ○ in Production order

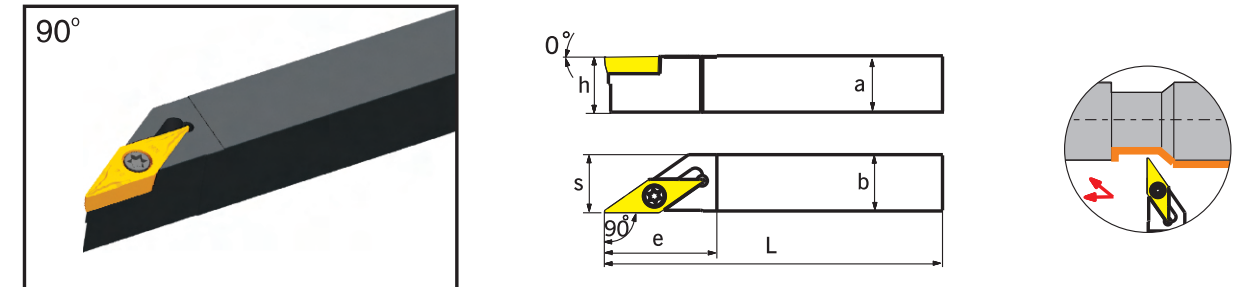
Turning tools

SVJBR/L



Type	Dimension(mm)							Applicable Inserts	Screw	Wrench		
	Stock		a	b	L	h	s				e	
	R	L										
SVJBR/L	1212F11	○	○	12	12	80	12	16	27	VB-T 1103□□	L60M2.5×5	T08
	1616H11	●	●	16	16	100	16	20	27			
	2020K11	●	●	20	20	125	20	25	27			
	2525M11	●	●	25	25	150	25	32	27			
	1616H16	●	●	16	16	100	16	20	36			
SVJBR/L	2020K16	●	●	20	20	125	20	25	41	VB-T 1604□□	L60M4×8	T15
	2525M16	●	●	25	25	150	25	32	41			
	3225P16	○	○	32	25	170	32	32	41			
	3232P16	●	○	32	32	170	32	32	41			

SVABR/L

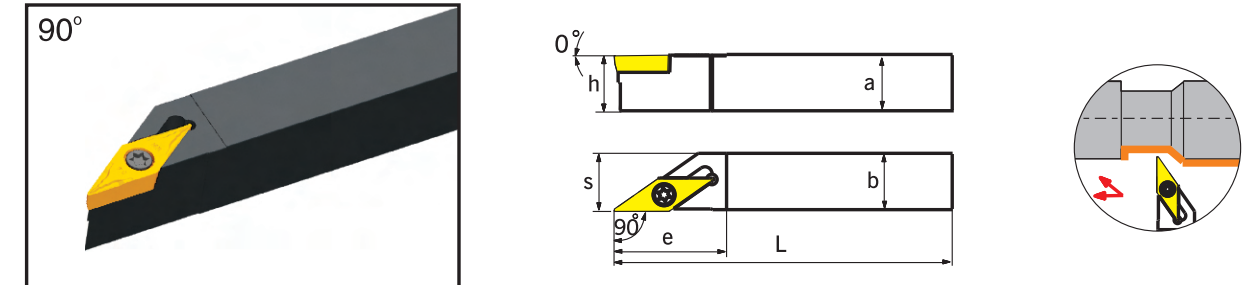


Type	Dimension(mm)							Applicable Inserts	Screw	Wrench		
	Stock		a	b	L	h	s				e	
	R	L										
SVABR/L	1616H16	○	○	16	16	100	16	16.5	32	VB-T 1604□□	L60M4×8	T15
	2020K16	●	●	20	20	125	20	20.5	32			
	2525M16	●	●	25	25	150	25	25.5	38			

● Stock ○ in Production order

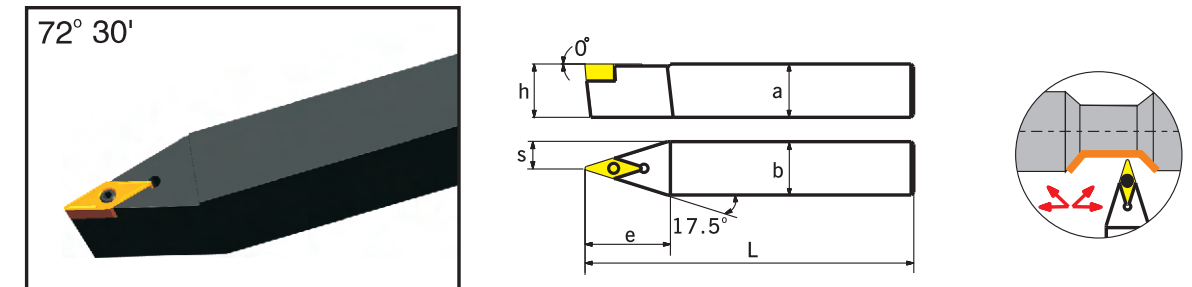
Turning tools

SVACR/L



Type	Dimension(mm)							Applicable Inserts	Screw	Wrench		
	Stock		a	b	L	h	s				e	
	R	L										
SVACR/L	1616H16	○	○	16	16	100	16	16.5	32	VC-T 1604□□	L60M4×8	T15
	2020K16	●	●	20	20	125	20	20.5	32			
	2525M16	●	●	25	25	150	25	25.5	38			

SVVBN

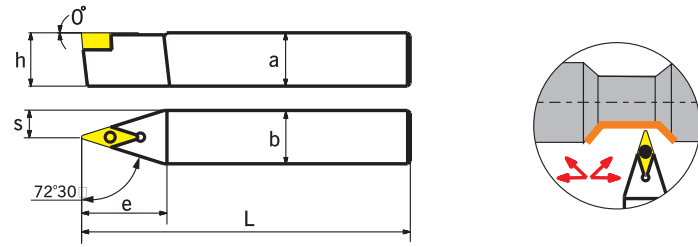
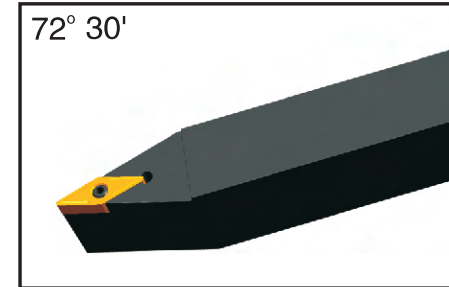


Type	Dimension(mm)							Applicable Inserts	Screw	Wrench		
	Stock		a	b	L	h	s				e	
	R	L										
SVVBN	1212F11	○	○	12	12	80	12	6	27	VB-T 1103□□	L60M2.5×5	T08
	1616H11	●	●	16	16	100	16	8	27			
	2020K11	●	●	20	20	125	20	10	30			
	1616H16	●	●	16	16	100	16	8	33	VB-T 1604□□	L60M4×8	T15
	2020K16	●	●	20	20	125	20	10	33			
	2525M16	○	○	25	25	150	25	12.5	38			
	3225P16	○	○	32	25	170	32	12.5	38			
	3232P16	○	○	32	32	170	32	16	38			

● Stock ○ in Production order

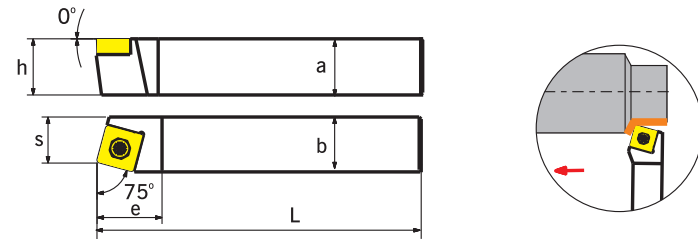
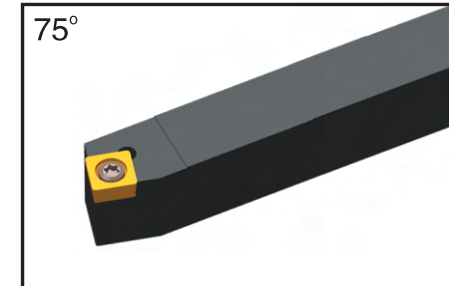
Turning tools

SVVCN



Type	Dimension(mm)							Applicable Inserts	Screw	Wrench	
	Stock	a	b	L	h	s	e				
SVVCN	1212F11	○	12	12	80	12	6	27	VC ₀ T 1103 _{□□}	L60M2.5×5	T08
	1616H11	○	16	16	100	16	8	27			
	2020K11	●	20	20	125	20	10	30			
	1616H16	●	16	16	100	16	8	33	VC ₀ T 1604 _{□□}	L60M4×8	T15
	2020K16	●	20	20	125	20	10	33			
	2525M16	●	25	25	150	25	12.5	38			
	3225P16	○	32	25	170	32	12.5	38			
	3232P16	○	32	32	170	32	16	38			

SSBCR/L

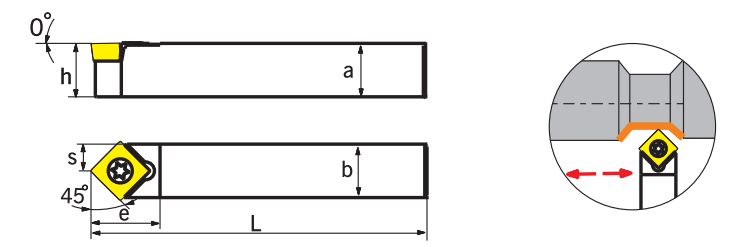
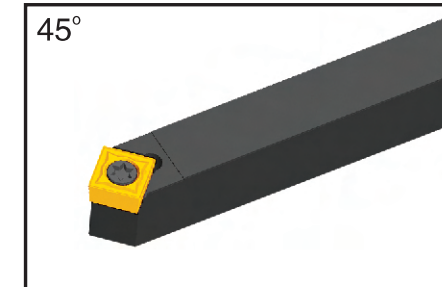


Type	Dimension(mm)							Applicable Inserts	Screw	Wrench		
	Stock		a	b	L	h	s				e	
	R	L										
SSBCR/L	1212F09	○	○	12	12	80	12	11	16	SC ₀ T 09T3 _{□□}	L60M4×8	T15
	1616H09	●	●	16	16	100	16	13	16			
	2020K12	●	●	20	20	125	20	17	25			
	2525M12	●	●	25	25	150	25	22	25	SC ₀ T 1204 _{□□}	L60M5×12	T20
	3232P12	○	○	32	32	170	32	27	28			

● Stock ○ in Production order

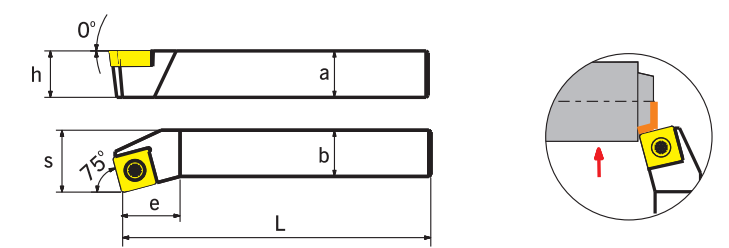
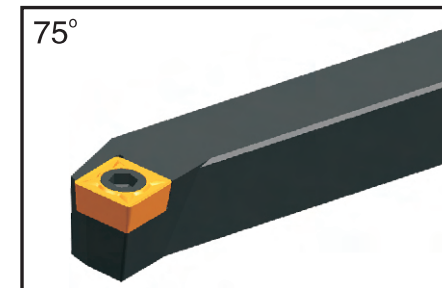
Turning tools

SSDCN



Type	Dimension(mm)							Applicable Inserts	Screw	Wrench		
	Stock		a	b	L	h	s				e	
	R	L										
SSDCN	1212F09	○	○	12	12	80	12	6	15.5	SC ₀ T 09T3 _{□□}	L60M4×8	T15
	1616H09	●	●	16	16	100	16	8	15.5			
	2020K09	●	●	20	20	125	20	10	15.5			
	2525M09	●	●	25	25	150	25	12.5	24			
	2020K12	●	●	20	20	125	20	10	15.5	SC ₀ T 1204 _{□□}	L60M5×12	T20
	2525M12	●	○	25	25	150	25	12.5	24			
	3232P12			32	32	170	32	16	24			

SSKCR/L

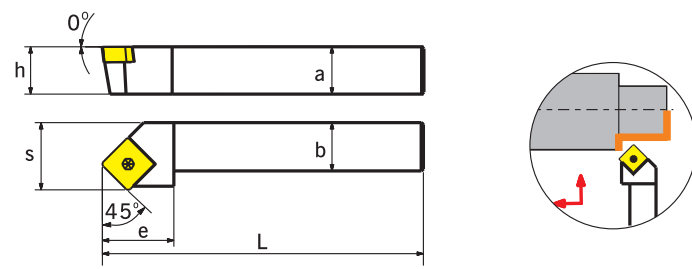
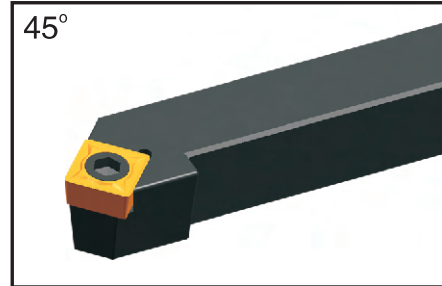


Type	Dimension(mm)							Applicable Inserts	Screw	Wrench		
	Stock		a	b	L	h	s				e	
	R	L										
SSKCR/L	1616H09	○	○	16	16	100	16	20	13	SC ₀ T 09T3 _{□□}	L60M4×8	T15
	2020K09	●	●	20	20	125	20	25	18			
	2020K12	●	●	20	20	125	20	20	18			
	2525M12	○	○	25	25	150	25	32	22	SC ₀ T 1204 _{□□}	L60M5×12	T20
	3232P12			32	32	170	32	40	27			

● Stock ○ in Production order

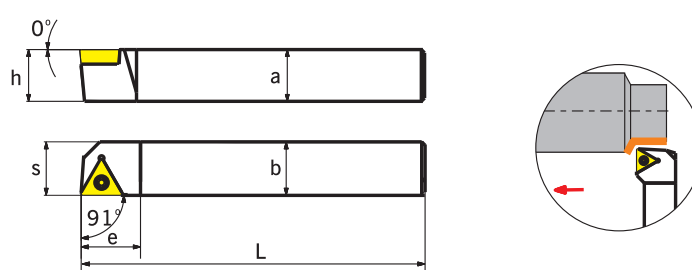
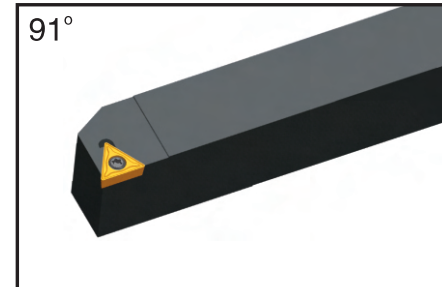
Turning tools

SSSCR/L



Type	Dimension(mm)							Applicable Inserts	Screw	Wrench					
	Stock		a	b	L	h	s				e				
	R	L													
SSSCR/L	1616H09	○	○	16	16	100	16	20	13	SC-T 09T3□□	L60M4×8	T15			
	2020K09	●	●	20	20	125	20	25	18						
	2020K12	●	●	20	20	125	20	20	18						
	2525M12	○	○	25	25	150	25	32	22				SC-T 1204□□	L60M5×12	T20
	3232P12			32	32	170	32	40	27						

STACR/L

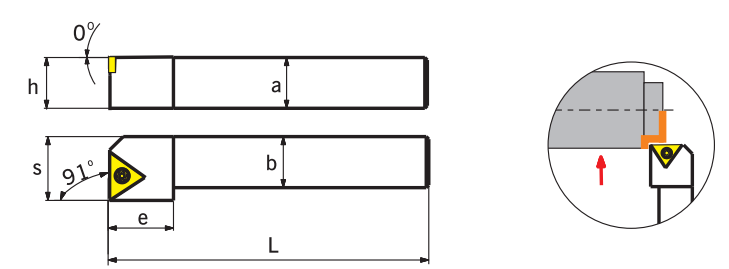
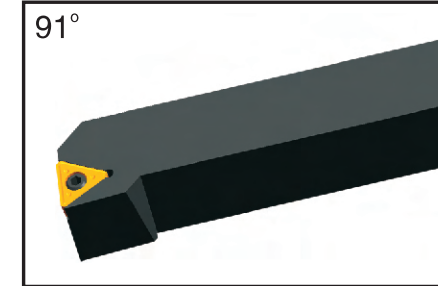


Type	Dimension(mm)							Applicable Inserts	Screw	Wrench		
	Stock		a	b	L	h	s				e	
	R	L										
STACR/L	1212F11			12	12	80	12	12.5	14	TC-T 1102□□	L60M2.5×5	T08

● Stock ○ in Production order

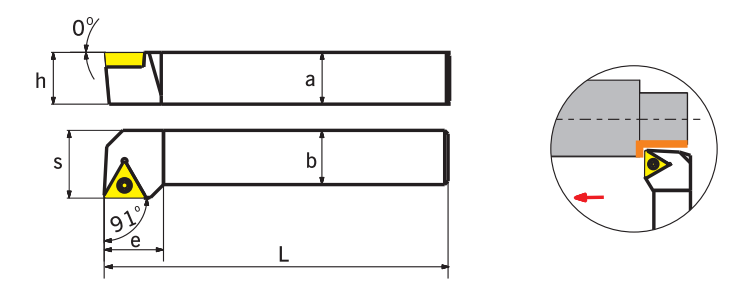
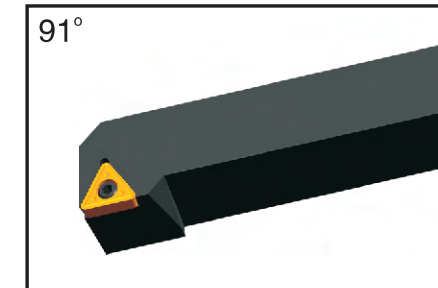
Turning tools

STFCR/L



Type	Dimension(mm)							Applicable Inserts	Screw	Wrench		
	Stock		a	b	L	h	s				e	
	R	L										
STFCR/L	1212F11	○	○	12	12	80	12	16	14	TC-T 1102□□	L60M2.5×5	T08
	1616H11	●	●	16	16	100	16	20	14			
	2020K11	●	●	20	20	125	20	25	14			
	1616H16	●	●	16	16	100	16	20	19	TC-T 16T3□□	L60M4×8	T15
	2020K16	●	●	20	20	125	20	25	19			
	2525M16	●	●	25	25	150	25	32	19			

STGCR/L

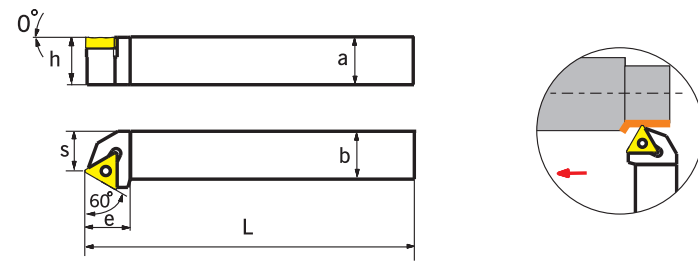
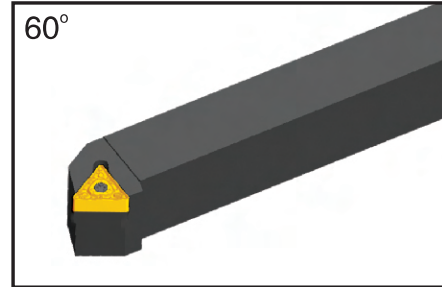


Type	Dimension(mm)							Applicable Inserts	Screw	Wrench					
	Stock		a	b	L	h	s				e				
	R	L													
STGCR/L	0808D09			08	08	60	8	10	11	TC-T 0902□□	L60M2.2×5	T06			
	1010E09	○	○	10	10	70	10	12	11						
	1212F11	○	○	12	12	80	12	16	14				TC-T 1102□□	L60M2.5×5	T08
	1616H11	●	●	16	16	100	16	20	16						
	2020K16	●	●	20	20	125	20	25	21						
	2525M16	●	●	25	25	150	25	32	21				TC-T 16T3□□	L60M4×8	T15

● Stock ○ in Production order

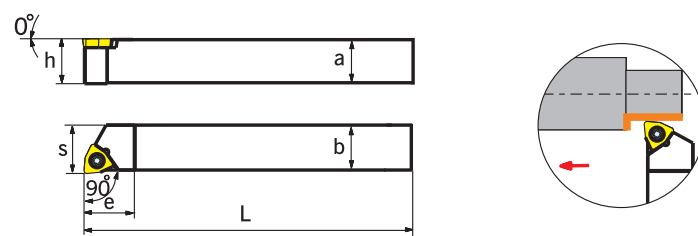
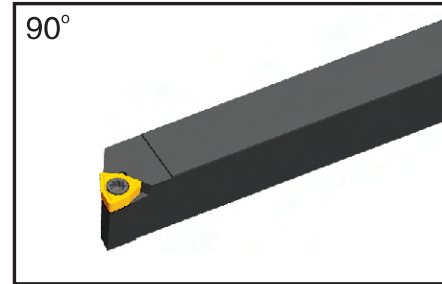
Turning tools

STTCR/L



Type	Dimension(mm)							Applicable Inserts	Screw	Wrench		
	Stock		a	b	L	h	s				e	
	R	L										
STTCR/L	1616H11	○		16	16	100	16	13	14	TC-T 1102□□	L60M2.5×5	T08
	1616H16	○		16	16	100	16	13	19			
	2020K16			20	20	125	20	17	19			

SWACR/L

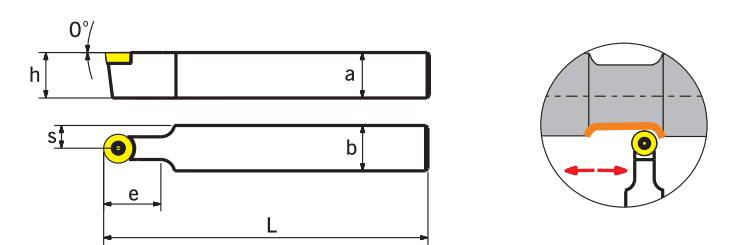
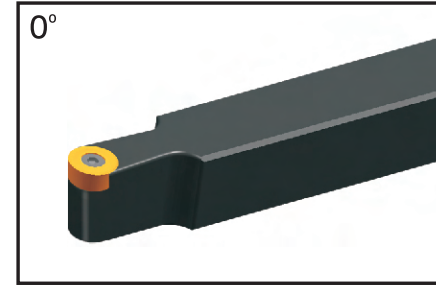


Type	Dimension(mm)							Applicable Inserts	Screw	Wrench		
	Stock		a	b	L	h	s				e	
	R	L										
SWACR/L	1010E04			10	10	70	10	10.5	10	WC-X 0402□□	L60M2.5×5	T08
	1212F04	○		12	12	80	12	12.5	14			
	1616H06	●	○	16	16	100	16	16.5	20			
	2020K08	●	●	20	20	125	20	20.5	24			
										WC-X 0804□□	L60M4×8	T15

● Stock ○ in Production order

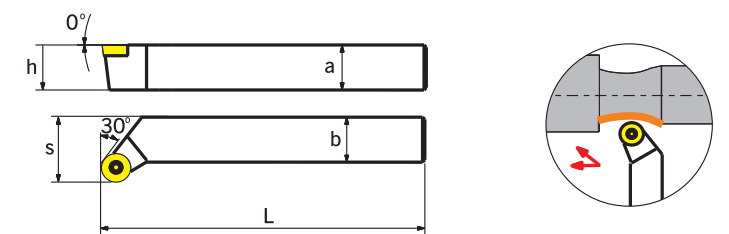
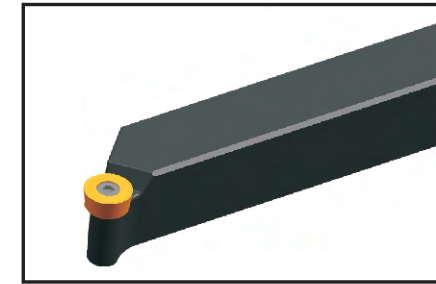
Turning tools

SRDCN



Type	Dimension(mm)							Applicable Inserts	Screw	Wrench		
	Stock		a	b	L	h	s				e	
	R	L										
SRDCN	2020K06	●		20	20	125	20	10	35	RC-T 0602□□	L60M2.5×6	T08
	2525M06	●		25	25	150	25	12.5	35			
	2020K08	○		20	20	125	20	10	35			
	2525M08	○		25	25	150	25	12.5	35	RC-T 1003□□	L60M3.5×10	T15
	2020K10	○		20	20	125	20	10	35			
	2525M10	○		25	25	150	25	12.5	35			
	2020K12	●		20	20	125	20	10	35	RC-T 1204□□	L60M3.5×12	T15
	2525M12	●		25	25	150	25	12.5	35			
	3225P12	○		32	25	170	32	16	35			

SRGCR/L

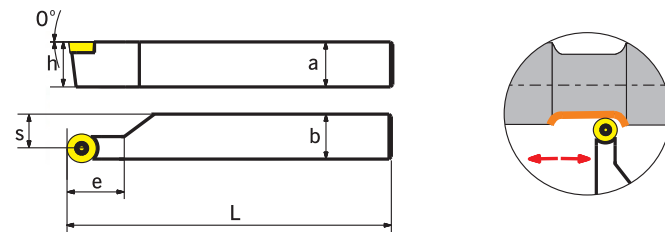
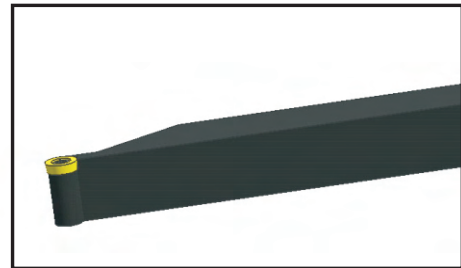


Type	Dimension(mm)							Applicable Inserts	Screw	Wrench		
	Stock		a	b	L	h	s				e	
	R	L										
SRGCR/L	2020K10			20	20	125	20	25		RC-T1003M0	L60M3.5×10	T15
	2525M10			25	25	150	25	32				
	2020K12	○		20	20	125	20	27				
	2525M12	○		25	25	150	25	32		RC-T1204M0		
	3225P12	○		32	25	170	32	32				
	3232P12			32	32	200	32	40				

● Stock ○ in Production order

Turning tools

SRACR/L

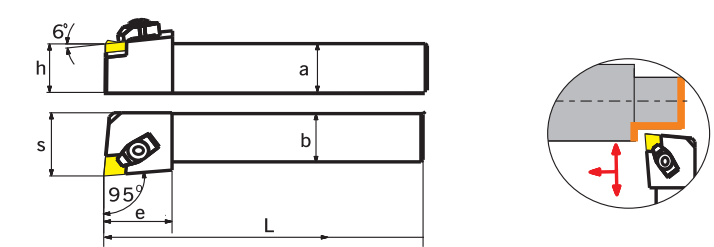
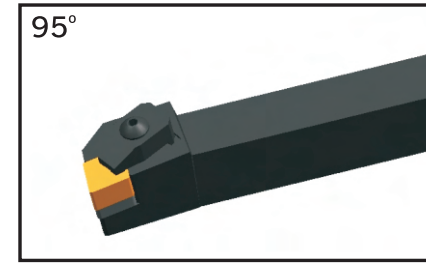


Type	Dimension(mm)							Applicable Inserts	Screw	Wrench		
	Stock		a	b	L	h	s					
	R	L										
SRACR/L	2020K06		20	20	125	20	13	35	RC-T0603MO	L60M2.5×6	T08	
	2525M06		25	25	150	25	18	35				
	2020K08	●	○	20	20	125	20	11				35
	2525M08	●	○	25	25	150	25	16	35	RC-T0803MO	L60M3×7	T09
	2020K10	●	○	20	20	125	20	9	35	RC-T1003MO	L60M3.5×10	T15
	2525M10	●	○	25	25	150	25	14	35			
	2020K12	●	○	20	20	125	20	7	40	RC-T1204MO	L60M3.5×12	T15
	2525M12	●	○	25	25	150	25	12	40			
	3225P12			32	25	170	32	12	40			
3232P12			32	32	200	32	18	40				

● Stock ○ in Production order

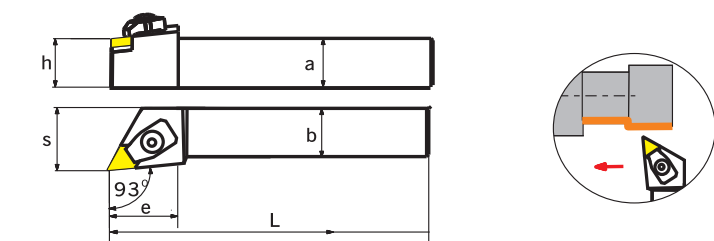
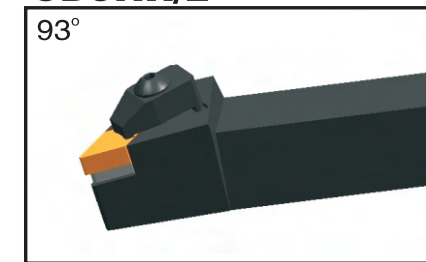
Turning tools

CCLNR/L



Type	Dimension(mm)							Applicable Inserts	Shim	Wrench	Clamp	Clamp screw	screw		
	Stock		a	b	L	h	s							e	
	R	L													
CCLNR/L	2020K12	●	○	20	20	125	20	27	32	CN □□ 1207□□	MC 1204	S4,S3	CCL2612	DM 0625	DSP 0612
	2525M12	●	○	25	25	150	25	27	36						
	2525M16	●	○	25	25	150	25	32	36	CN □□ 1607□□	MC 1604	S4	CCL2816	DM 0830	DSP 0812
	3225P16	●	○	32	25	170	32	32	36						

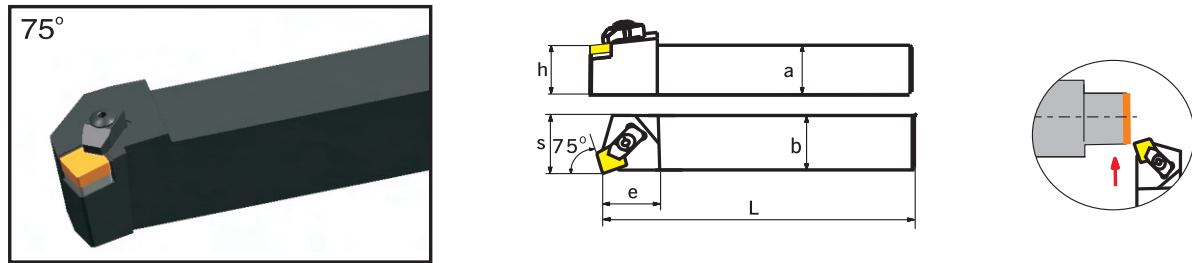
CDJNR/L



Type	Dimension(mm)							Applicable Inserts	Shim	Wrench	Clamp	Clamp screw	screw		
	Stock		a	b	L	h	s							e	
	R	L													
CDJNR/L	2525M15	●	○	25	25	150	25	32	32	DN □□ 1507□□	MD 1504	S4,S3	CCL2612	DM 0625	DSP 0612
	3225P15	●	○	32	25	170	32	32	32						

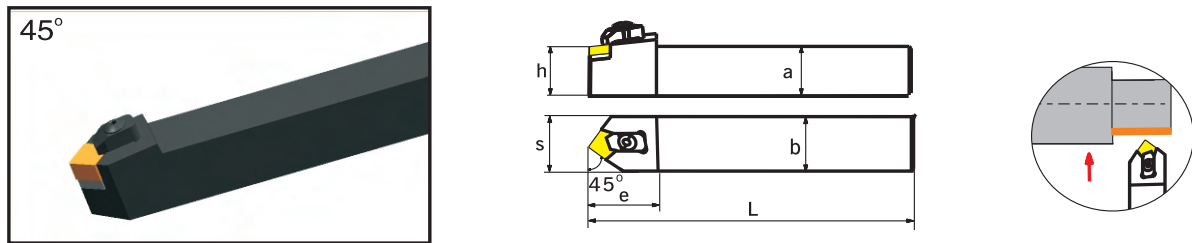
Turning tools

CSKNR/L



Type	Dimension(mm)							Applicable Inserts	Shim	Wrench	Clamp	Clamp screw	screw		
	Stock		a	b	L	h	s							e	
	R	L													
CSKNR/L	2020K12	●	●	20	20	125	20	25	25	SN □□ 1207□□	MS 1204	S4,S3	CCL2612	DM 0625	DSP 0612
	2525M12	●	●	25	25	150	25	32	25						
	3225P12	●	●	32	25	170	32	32	25						
	3225P15	●	●	32	25	170	32	32	32						
										SN □□ 1507□□	MS 1504	S4	CCL2816	DM 0830	DSP 0812

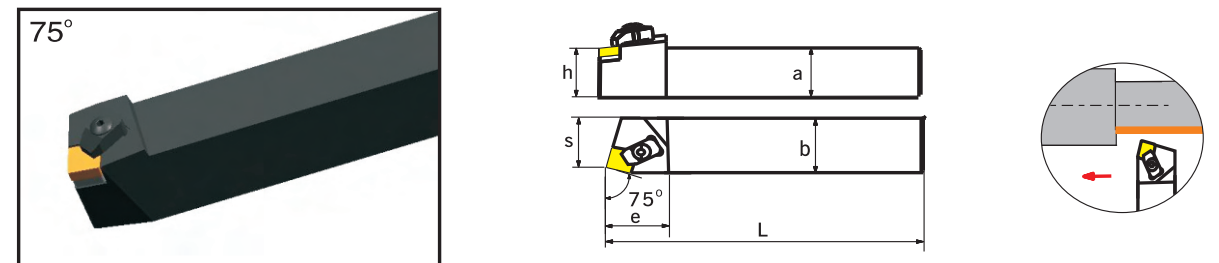
CSDNN



Type	Dimension(mm)							Applicable Inserts	Shim	Wrench	Clamp	Clamp screw	screw		
	Stock		a	b	L	h	s							e	
	R	L													
CSDNN	2020K12	●	●	20	20	125	20	25	25	SN □□ 1207□□	MS 1204	S4,S3	CCL2612	DM 0625	DSP 0612
	2525M12	●	●	25	25	150	25	32	25						
	3225P12	●	●	32	25	170	32	32	25						
	3225P15	●	●	32	25	170	32	32	32						
										SN □□ 1507□□	MS 1504	S4	CCL2816	DM 0830	DSP 0812

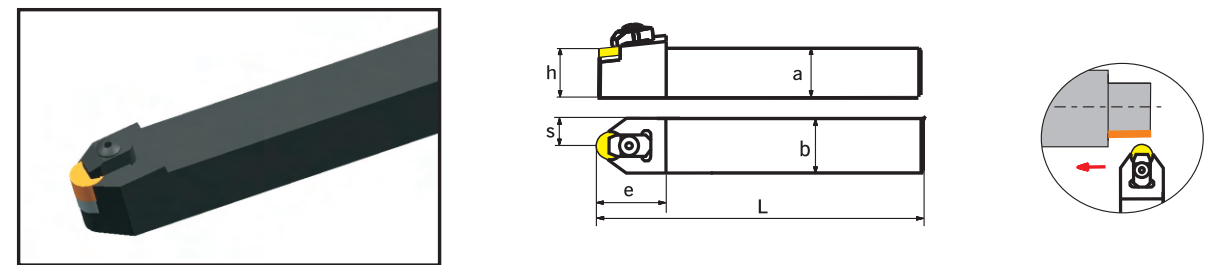
Turning tools

CSRNR/L



Type	Dimension(mm)							Applicable Inserts	Shim	Wrench	Clamp	Clamp screw	screw			
	Stock		a	b	L	h	s							e		
	R	L														
CSRNR/L	2020K12	●	●	20	20	125	20	22	32	SN □□ 1207□□	MS 1204	S4,S3	CCL2612	DM 0625	DSP 0612	
	2525M12	●	●	25	25	150	25	27	32							
	3225P12	●	●	32	25	170	32	27	32							
	3225P15	●	●	32	25	170	32	32	40							
										SN □□ 1507□□	MS 1504	S4	CCL2816	DM 0830	DSP 0812	

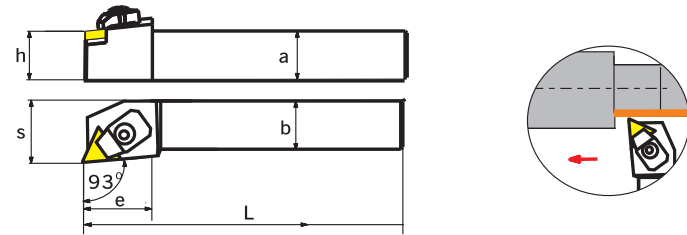
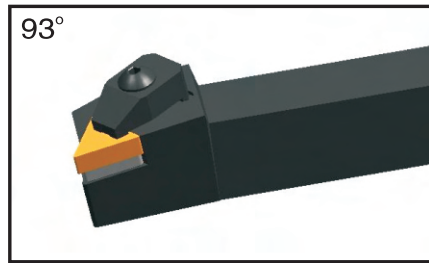
CRDNN



Type	Dimension(mm)							Applicable Inserts	Shim	Wrench	Clamp	Clamp screw	screw		
	Stock		a	b	L	h	s							e	
	R	L													
CRDNN	2020K12	●	●	20	20	125	20	10	32	RN □□ 1207□□	MR1204	S3,S4	CCL2612	DM 0625	DSP 0612
	2525M12	●	●	25	25	150	25	12.5	32						
	3225P12	●	●	32	25	170	32	12.5	32						
	3232P15	●	●	32	32	170	32	17.5	40						
										RN □□ 1507□□	CR1504	S4	CCL2816	DM 0830	DSP 0812

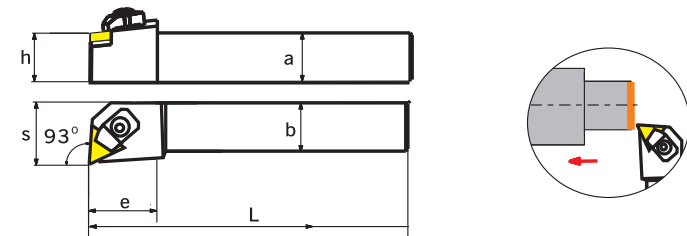
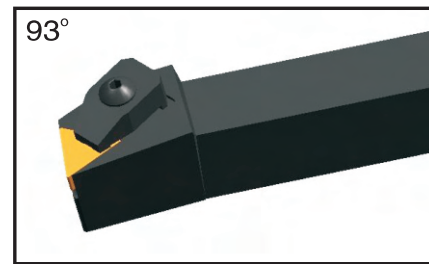
Turning tools

CTJNR/L



Type	Dimension(mm)							Applicable Inserts	Shim	Wrench	Clamp	Clamp screw	screw		
	Stock		a	b	L	h	s							e	
	R	L													
CTJNR/L	2020K16	●	●	20	20	125	20	25	30	TN □□ 1607□□	MT 1603	S4,S3	CCL2312	DM 0625	DSP 0510
	2525M16	●	●	25	25	150	25	32	30						

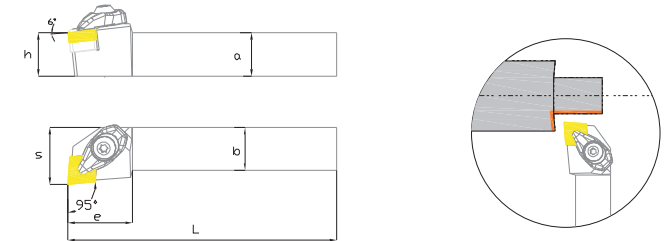
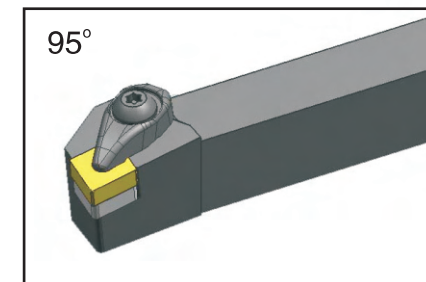
CTUNR/L



Type	Dimension(mm)							Applicable Inserts	Shim	Wrench	Clamp	Clamp screw	screw		
	Stock		a	b	L	h	s							e	
	R	L													
CTUNR/L	2020K16	●	●	20	20	125	20	25	27	TN □□ 1607□□	MT 1603	S4,S3	CCL2312	DM 0625	DSP 0510
	2525M16	●	●	25	25	150	25	32	27						

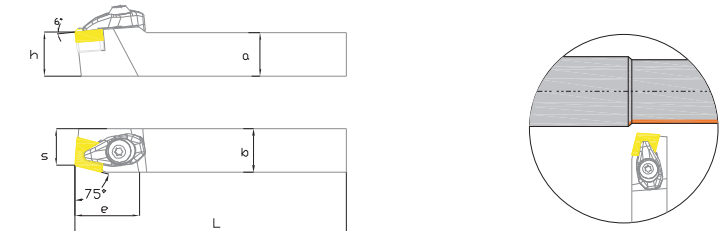
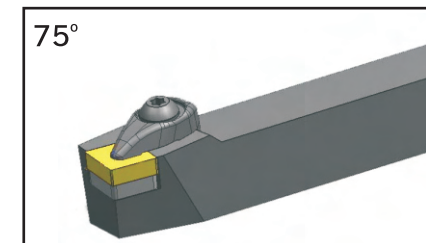
Turning tools

DCLNR/L



Type	Dimension(mm)							Applicable Inserts	Shim	Wrench	Clamp	Clamp screw	screw		
	Stock		a	b	L	h	s							e	
	R	L													
DCLNR/L	2020K12	●	●	20	20	125	20	25	32	CN □□ 1204□□	MC 1204	S4, S3	DCL2612	DM 0625	DSP 0612
	2525M12	●	●	25	25	150	25	32	36						
	3232P12	●		32	32	170	32	40	36						
	2525M16	●	●	25	25	150	25	32	36	CN □□ 1604□□	MC 1604	S4	DCL2816	DM 0625	DSP 0812
	3232P16			32	32	170	32	40	36						

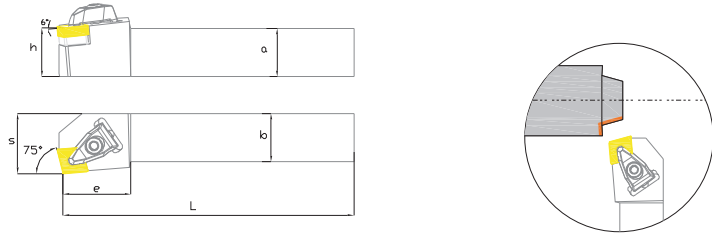
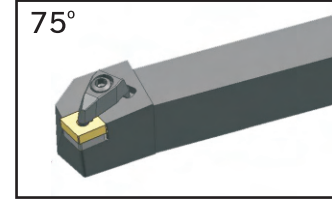
DCBNR/L



Type	Dimension(mm)							Applicable Inserts	Shim	Wrench	Clamp	Clamp screw	screw		
	Stock		a	b	L	h	s							e	
	R	L													
DCBNR/L	2020K12	●	●	20	20	125	20	25	32	CN □□ 1204□□	MC 1204	S4, S3	DCL2612	DM 0625	DSP 0612
	2525M12	●	●	25	25	150	25	32	36						
	3232P12	●		32	32	170	32	40	36						
	2525M16	●	●	25	25	150	25	32	36	CN □□ 1604□□	MC 1604	S4	DCL2816	DM 0625	DSP 0812
	3232P16			32	32	170	32	40	36						

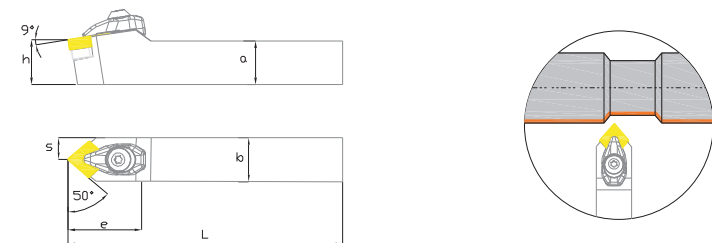
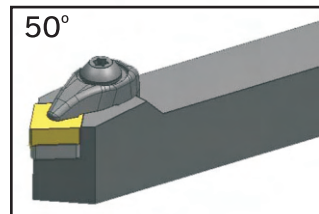
Turning tools

DCKNR/L



Type	Dimension(mm)								Applicable Inserts	Shim	Wrench	Clamp	Clamp screw	screw							
	Stock		a	b	L	h	s	e													
	R	L																			
DCKNR/L	2020K12	●	●	20	20	125	20	25	32	CN □□ 1204□□	MC 1204	S4	DCL2612	DM 0625	DSP 0612						
	2525M12	●	●	25	25	150	25	32	36												
	3232P12	●		32	32	170	32	40	36												
	2525M16	●	●	25	25	150	25	32	36							CN□□ 1604□□	MC 1604	S4 , S3	DCL2816	DM 0625	DSP 0812
	3232P16			32	32	170	32	40	36												

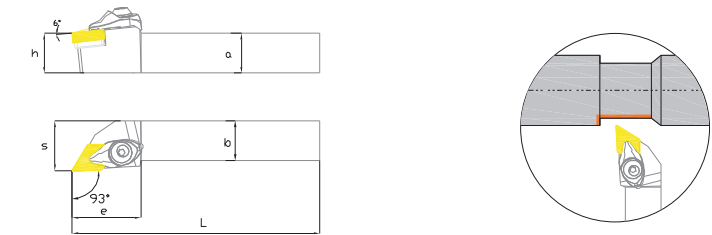
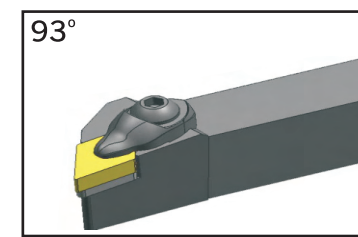
DCMNN



Type	Dimension(mm)								Applicable Inserts	Shim	Wrench	Clamp	Clamp screw	screw							
	Stock		a	b	L	h	s	e													
	R	L																			
DCMNN	2020K12	●	●	20	20	125	20	10	32	CN □□ 1204□□	MC 1204	S4	DCL2612	DM 0625	DSP 0612						
	2525M12	●	●	25	25	150	25	12.5	36												
	3232P12	●		32	32	170	32	16	36												
	2525M16	●	●	25	25	150	25	12.5	36							CN□□ 1604□□	MC 1604	S4 , S3	DCL2816	DM 0625	DSP 0812
	3232P16			32	32	170	32	16	36												

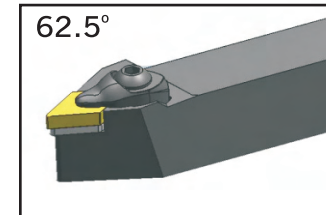
Turning tools

DDJNR/L



Type	Dimension(mm)								Applicable Inserts	Shim	Wrench	Clamp	Clamp screw	screw							
	Stock		a	b	L	h	s	e													
	R	L																			
DDJNR/L	2020K11	●	●	20	20	125	20	25	32	DN □□ 1104□□	MC 1204	S4 , S3	DCL2309	DM 0625	DSP 0510						
	2525M11	●	●	25	25	150	25	32	32												
	2020K15	●		20	20	125	20	25	36							DN□□ 1504□□	MC 1604	S4 , S3	DCL2612	DM 0625	DSP 0612
	2525M15	●	●	25	25	150	25	32	36												
	3232P15			32	32	170	32	40	36							DN□□ 1506□□	MC 1606				

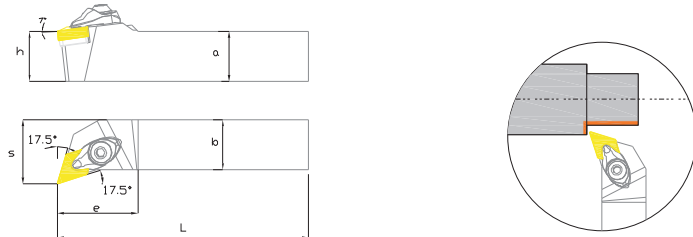
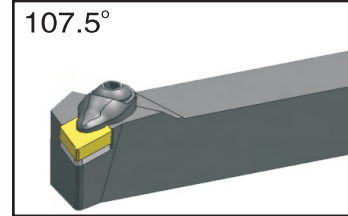
DDPNN



Type	Dimension(mm)								Applicable Inserts	Shim	Wrench	Clamp	Clamp screw	screw							
	Stock		a	b	L	h	s	e													
	R	L																			
DDPNN	2020K11	●	●	20	20	125	20	10	32	DN □□ 1104□□	MC 1204	S4 , S3	DCL2309	DM 0625	DSP 0510						
	2525M11	●	●	25	25	150	25	12.5	36												
	2020K15	●		20	20	125	20	10	36							DN□□ 1504□□	MC 1604	S4 , S3	DCL2612	DM 0625	DSP 0612
	2525M15	●	●	25	25	150	25	12.5	36												
	3232P15			32	32	170	32	16	36							DN□□ 1506□□	MC 1606				

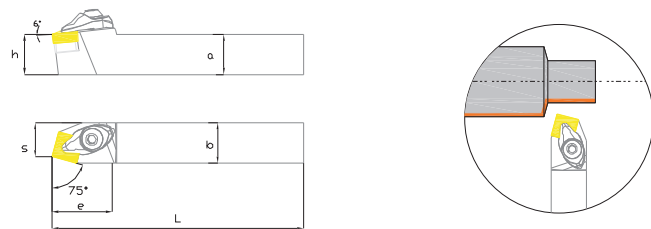
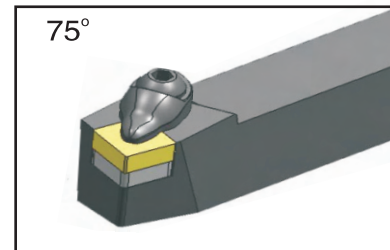
Turning tools

DDQNR/L



Type	Dimension(mm)								Applicable Inserts	Shim	Wrench	Clamp	Clamp screw	screw	
	Stock		a	b	L	h	s	e							
	R	L													
DDQNR/L	2020K11	●	●	20	20	125	20	25	32	DN □ 1104□	MC 1204	S4, S3	DCL2309	DM 0625	DSP 0510
	2525M11	●	●	25	25	150	25	32	36						
	2020K15	●		20	20	125	20	25	36						
	2525M15	●	●	25	25	150	25	32	36						
	3232P15			32	32	170	32	40	36						

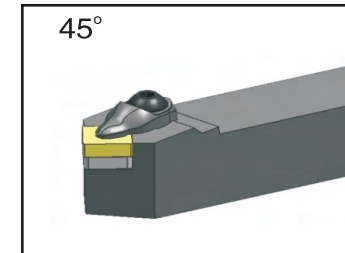
DSBNR/L



Type	Dimension(mm)								Applicable Inserts	Shim	Wrench	Clamp	Clamp screw	screw	
	Stock		a	b	L	h	s	e							
	R	L													
DSBNR/L	2020K12	●	●	20	20	125	20	17	32	SN □ 1204□	MS 1204	S3,S4	DCL 2612	DM 0625	DSP 0612
	2525M12	●	●	25	25	150	25	22	36						
	3232P12	●	●	32	32	170	32	27	36						
	2525P15	●	●	25	25	150	25	22	36						
	3232P15			32	32	170	32	27	36						

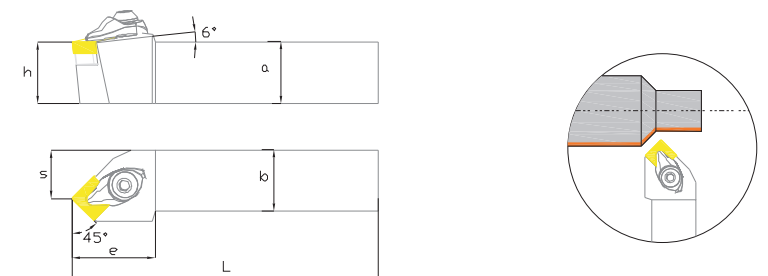
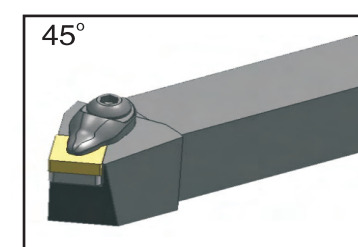
Turning tools

DSDNN



Type	Dimension(mm)								Applicable Inserts	Shim	Wrench	Clamp	Clamp screw	screw	
	Stock		a	b	L	h	s	e							
	R	L													
DSDNN	2020K12	●	●	20	20	125	20	10	25	SN □ 1204□	MS 1204	S3,S4	DCL 2612	DM 0625	DSP 0612
	2525M12	●	●	25	25	150	25	12.5	25						
	3232P12	●	●	32	32	170	32	12.5	25						
	3232P15	●	●	32	32	170	32	12.5	32						
				32	32	170	32	12.5	32						

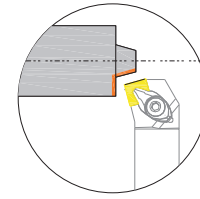
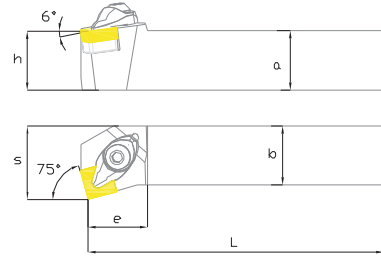
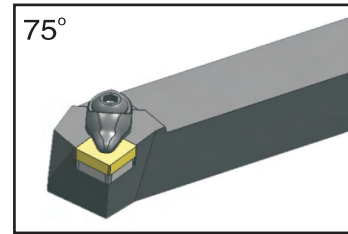
DSSNR/L



Type	Dimension(mm)								Applicable Inserts	Shim	Wrench	Clamp	Clamp screw	screw	
	Stock		a	b	L	h	s	e							
	R	L													
DSSNR/L	2020K12	●	●	20	20	125	20	17	32	SN □ 1204□	MS 1204	S3,S4	DCL 2612	DM 0625	DSP 0612
	2525M12	●	●	25	25	150	25	22	36						
	3232P12	●	●	32	32	170	32	27	36						
	2525P15	●	●	25	25	150	25	22	36						
	3232P15			32	32	170	32	22	36						

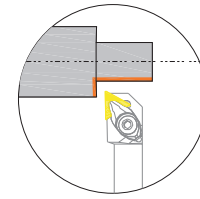
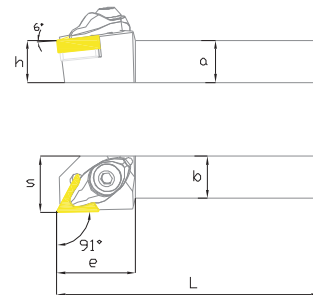
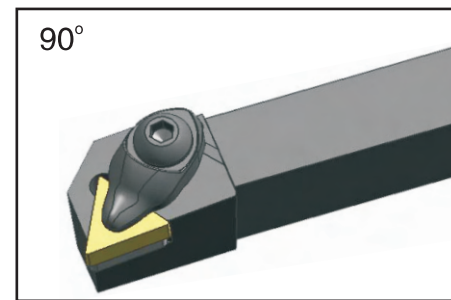
Turning tools

DSKNR/L



Type	Dimension(mm)							Applicable Inserts	Shim	Wrench	Clamp	Clamp screw	screw		
	Stock		a	b	L	h	s							e	
	R	L													
DSKNR/L	2020K12	●	●	20	20	125	20	25	25	SN □□ 1204□□	MS 1204	S3,S4	DCL 2612	DM 0625	DSP 0612
	2525M12	●	●	25	25	150	25	32	25						
	3232P12	●	●	32	32	170	32	32	25						
	3232P15	●	●	32	32	170	32	32	32						

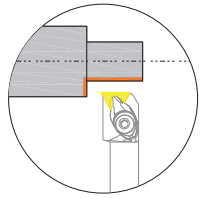
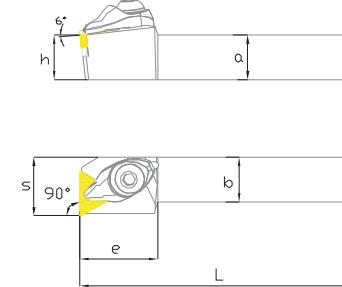
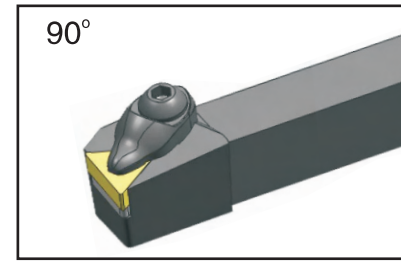
DTGNR



Type	Dimension(mm)							Applicable Inserts	Shim	Wrench	Clamp	Clamp screw	screw		
	Stock		a	b	L	h	s							e	
	R	L													
DTGNR	2020K16	●	●	20	20	125	20	25	25	TN □□ 1604□□	MT 1603	S3,S4	DCL 2309	DM 0625	DSP 0510
	2525M16	●	●	25	25	150	25	32	25						
	3225P16	●	●	32	25	170	32	32	25						
	3232P16	●	●	32	32	170	32	32	32						

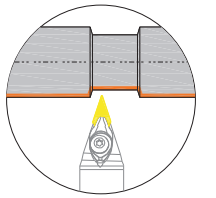
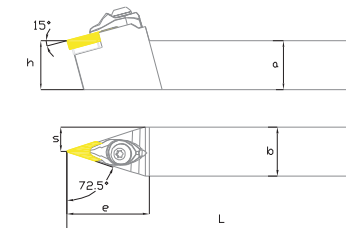
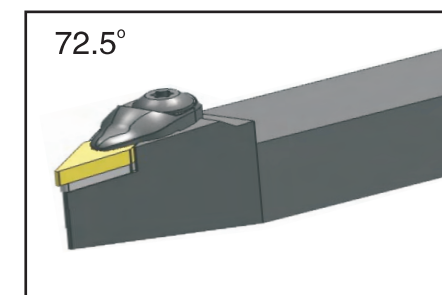
Turning tools

DTFNR



Type	Dimension(mm)							Applicable Inserts	Shim	Wrench	Clamp	Clamp screw	screw		
	Stock		a	b	L	h	s							e	
	R	L													
DTFNR/L	2020K16	●	●	20	20	125	20	25	25	TN □□ 1604□□	MT 1603	S3,S4	DCL 2309	DM 0625	DSP 0510
	2525M16	●	●	25	25	150	25	32	25						
	3225P16	●	●	32	25	170	32	32	25						
	3232P16	●	●	32	32	170	32	32	32						

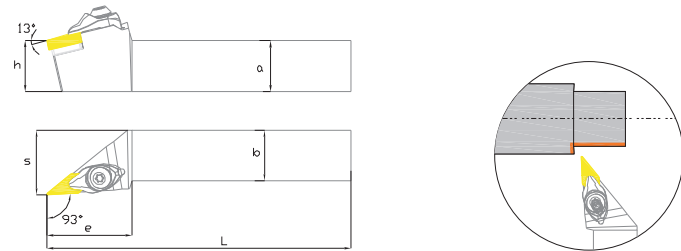
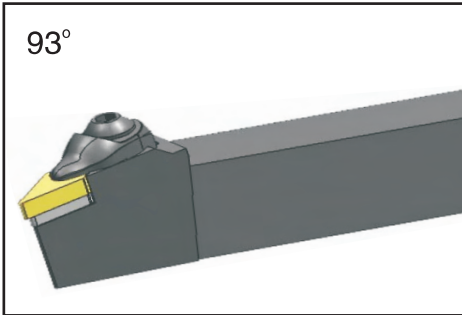
DVVNN



Type	Dimension(mm)							Applicable Inserts	Shim	Wrench	Clamp	Clamp screw	screw		
	Stock		a	b	L	h	s							e	
	R	L													
DVVNR/L	2020K16	●	●	20	20	125	20	25	25	VN □□ 1604□□	MV 1603	S3,S4	DCL 2609	DM 0625	DSP 0510
	2525M16	●	●	25	25	150	25	32	25						
	3225P16	●	●	32	25	170	32	32	25						
	3232P16	●	●	32	32	170	32	32	32						

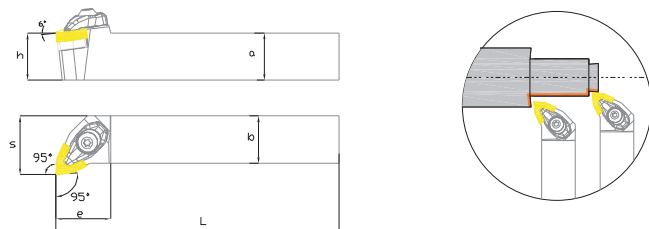
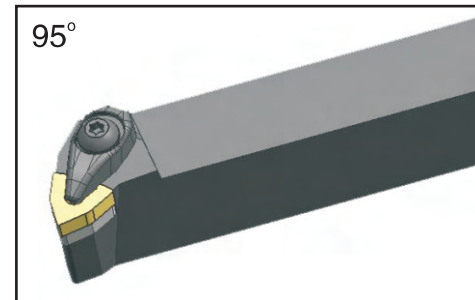
Turning tools

DVJNR



Type	Dimension(mm)							Applicable Inserts	Shim	Wrench	Clamp	Clamp screw	screw		
	Stock		a	b	L	h	s							e	
	R	L													
DVJNR/L	2020K16	●	●	20	20	125	20	25	25	VN □□ 1604□□	MV 1603	S3,S4	DCL 2609	DM 0625	DSP 0510
	2525M16	●	●	25	25	150	25	32	25						
	3225P16	●	●	32	25	170	32	32	25						
	3232P16	●	●	32	32	170	32	32	32						

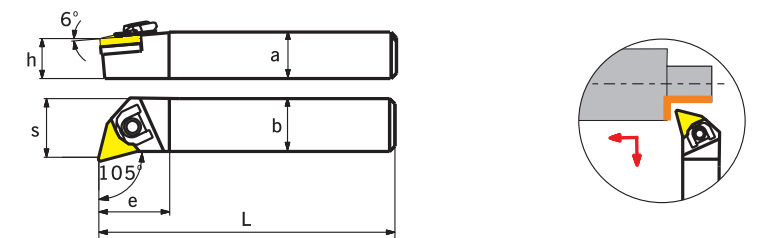
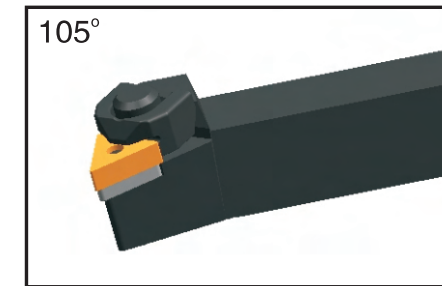
DWLNR



Type	Dimension(mm)							Applicable Inserts	Shim	Wrench	Clamp	Clamp screw	screw		
	Stock		a	b	L	h	s							e	
	R	L													
DWLNR/L	2020K08	●	●	20	20	125	20	25	25	WN □□ 0804□□	MW 0804	S4 S3	DCL 2612	DM 0625	DSP 0612
	2525M08	●	●	25	25	150	25	32	25						
	3225P08	●	●	32	25	170	32	32	25						
	3232P08	●	●	32	32	170	32	32	32						

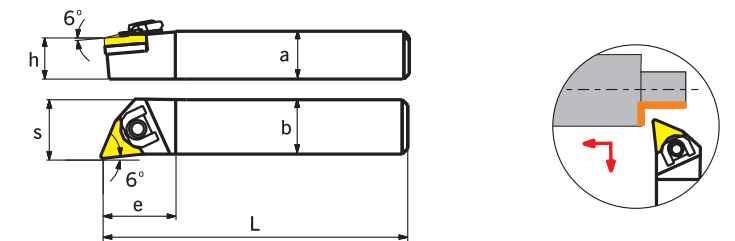
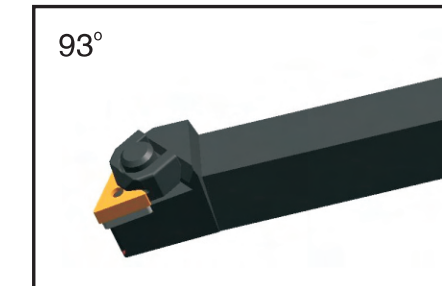
Turning tools

WTQNR/L



Type	Dimension(mm)							Applicable Inserts	Clamping screw	Shim	Wrench	Clamp	Clamping stud		
	Stock		a	b	L	h	s							e	
	R	L													
WTQNR/L	2020K16	●	●	20	20	125	20	25	33	TN□□ 1604□□	W 0525	WT 1603	S2, S3	WTL16	SZ0515
	2525M16	●	●	25	25	150	25	32	33						
	3232P16	○	○	32	32	170	32	32	33						

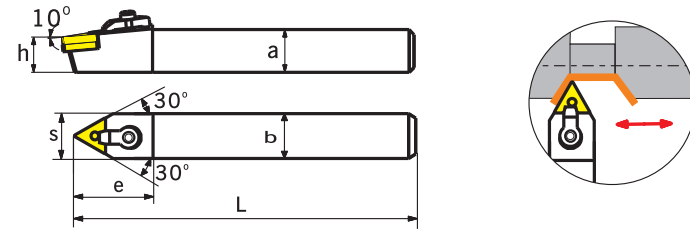
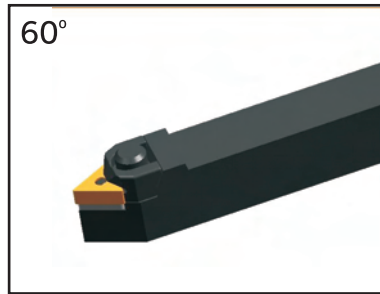
WTJNR/L



Type	Dimension(mm)							Applicable Inserts	Clamping screw	Shim	Wrench	Clamp	Clamping stud		
	Stock		a	b	L	h	s							e	
	R	L													
WTJNR/L	1316H16	●	●	13	16	125	31	20	20	TN□□ 1604□□	W 0525	WT 1603	S2, S3	WTL16	SZ0515
	1616K16	●	●	16	16	125	31	16	20						
	2020K16	○	○	20	20	125	31	20	25						
	2525M16	●	○	25	25	150	31	25	32						
	3232P16	○	○	32	32	170	31	32	40						

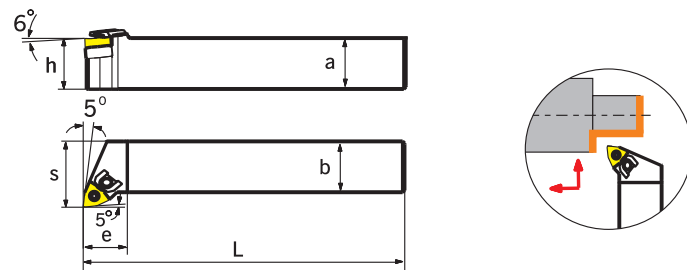
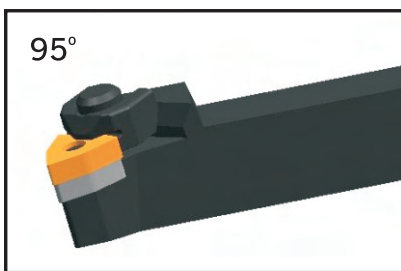
Turning tools

WTENN



Type		Dimension(mm)						Applicable Inserts	Clamping screw	Shim	Wrench	Clamp	Clamping stud		
		Stock		a	b	L	h							s	e
		R	L												
WTENN	2020K16	●	●	20	20	125	20	25	33	TN□□ 1604□□	W0525	WT 1603	S2, S3	WTL16	SZ0515
	2525M16	●	●	25	25	150	25	32	33						
	3232P16	○	○	32	32	170	32	32	33						

WWLNR/L



Type		Dimension(mm)						Applicable Inserts	Clamping screw	Shim	Wrench	Clamp	Clamping stud		
		Stock		a	b	L	h							s	e
		R	L												
WWLNR/L	2020K08			20	20	125	25	20	32	WN□□ 0804□□	W0525	WW 0804	S3	WWL08	SZ 0618
	2525M08			25	25	150	32	25	33						
	3232P08			20	32	170	40	32	33						

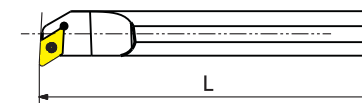
● Stock ○ in Production order

Turning tools

Example

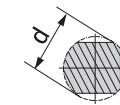


1. Type of bars



记号 Symbol	A	E	C	S	X
Type of shank	Steel Shank+ Oil Hole	Carbide Shank +Oil Hole	Carbide Shank	Steel Shank	Special Insert Application

2. Shank diameter



3. Tool length

H	K	M	N	Q	R	S	T	U	V
100	125	150	160	180	200	250	300	350	400

4. Clamping system

Top clamping	Hole clamping	Screw on
M	P	S

5. Insert shape

6. Bar style

K	F	U	L	P

7. Insert clearance angle

B	C	P	N

8. Hand of tools

--	--

9. Cutting edge length

--	--	--	--	--